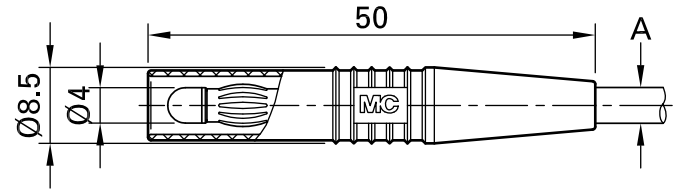
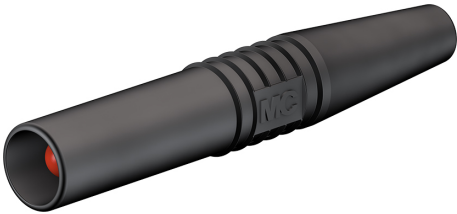


SLS425-SL/N



Item number 22.2665-*

In-line, Ø 4 mm, with spring-loaded MULTILAM, for self-assembly of test leads. With rigid insulating sleeve. Nickel-plated version. Solder connection.

Technical data	
Diameter of plug system	4 mm
Rated Values	1000 V, CAT II, 32 A
Surface treatment electrical contact	Ni
Base material electrical contact	CuZn
Standard color(s) *	21 22 23
Outer diameter	4.1 mm
Test accessory acc. to	IEC EN 61010-031
Component parts	KT425-L; LS425-SL/N
Approvals	CE