

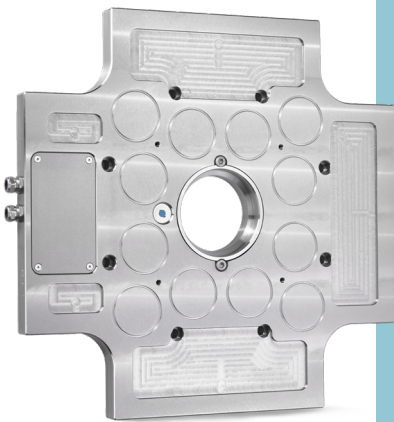
Magnetic clamping

QMC 123 Advanced | Plastics Industry



QMC 123 ADVANCED & QMC 123 ADVANCED COMPACT

High-performance magnetic clamping system for Small Tonnage applications.



TECHNICAL SPECIFICATIONS



Plate thickness:
 • Advanced: 46 mm
 • Advanced compact: 37 mm



Human machine interface:
 Premium line



Magnetic module performance:
 8 kN/pot

KEY BENEFITS



Compact



Safe



User-friendly



Integration

- Plug & Play solution
- **Specifically adapted to small machine tonnage & small molds**
- Customized upon customer specs
- Integrable in machine HMI or with separate ergonomic controller
- Full integration, installation & troubleshooting support
- Compact version with a plate thickness of 37 mm



Operation

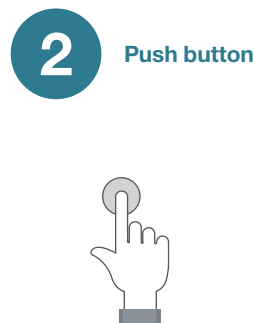
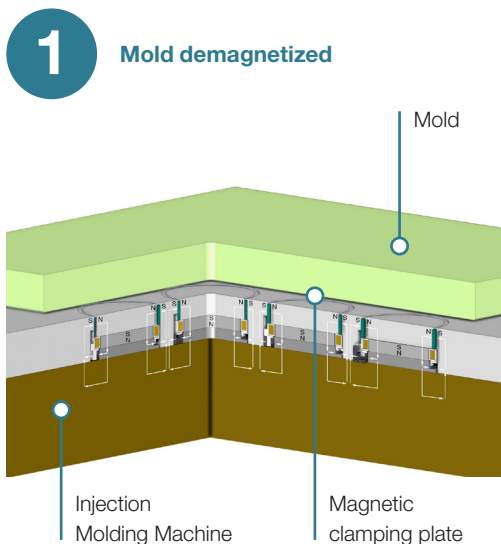
- Robust solution
- Operator friendly: Intuitive operations adaptable to any operators' expertise level on hand pendant or machines HMI
- WW service support assistance



Profitability

- Robust & long-life
- Maximized productivity, thanks to:
 - Highest clamping performance & quality
 - Fastest operations with no downtime
- Extended molds lifetime
- Fast ROI & cut-down TCO

MAGNETIC TECHNOLOGY



By pressing a button the polarity of the AINico is reversed. The mold is magnetized.

