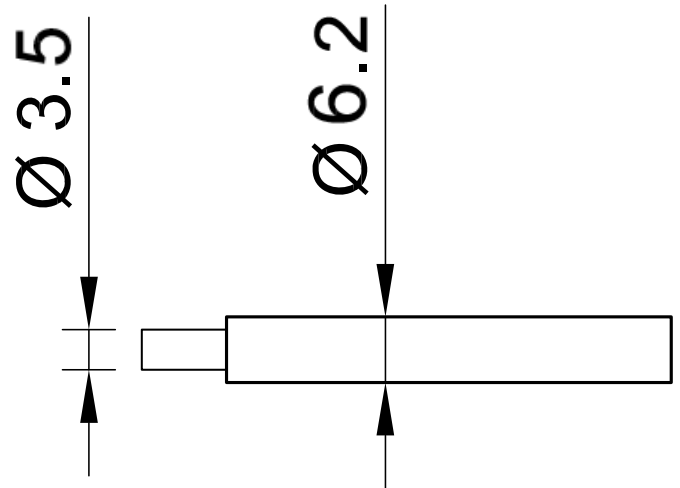


# SILI-S 6,0



Item number 61.7612-\*

Highly flexible stranded wire 6,0 mm<sup>2</sup> with reinforced insulation.

Technical data	
Rated Values	AC 1000 V, 54 A / DC 1500 V, 54 A
Standard color(s) *	21 22 23 33
Lead insulation	SIL
Temperature range	-50 °C ... +90 °C
Strand design (n x Ø mm)	1548 x 0,07
Lead weight	80.0 kg/km
Conductor diameter	3.5 mm
Cable diameter	6.2 mm
Insulation thickness	1.35 mm
Approvals	UR, CE, UKCA, EAC