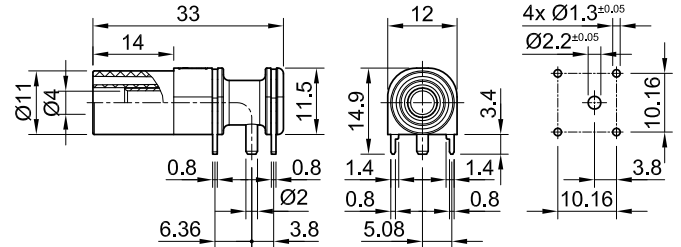


XELW-4



Item number 66.9040-*

For mounting on printed circuit boards, touch-protected according to IEC/EN 61010-1. The socket is directly soldered onto printed circuit boards. The right-angled configuration minimizes the force transmitted to the printed circuit board through the plugged-in test lead. Right-angled $\varnothing 4$ mm rigid socket accepting spring-loaded $\varnothing 4$ mm plugs with rigid insulating sleeve.

Machined brass. $\varnothing 2$ mm round pin and contacts for mounting on printed circuit boards.

Technical data	
Diameter of plug system	4 mm
Rated Values	1000 V, CAT III, 24 A
Surface treatment electrical contact	Au
Base material electrical contact	CuZn
Standard color(s) *	21 22 23
Optional color(s)	24 25
Test accessory acc. to	IEC EN 61010-2-030
Approvals	UR