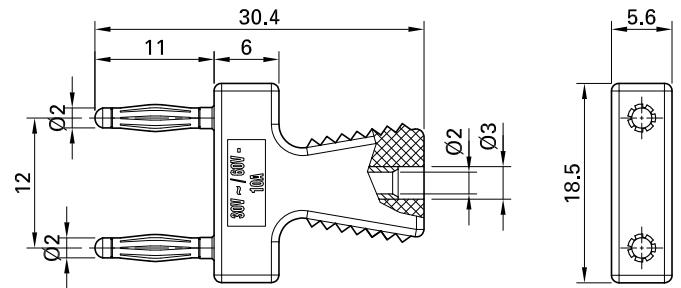
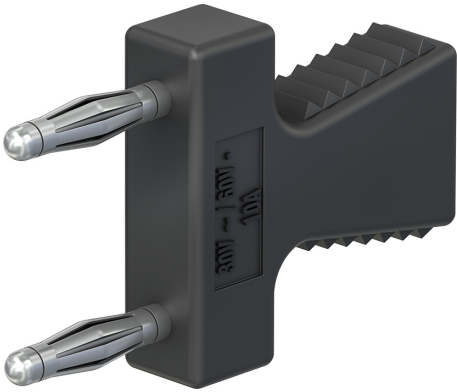


# KS2-12L/N



Item number 63.9355-\*

Insulated, Ø 2 mm, with rigid Ø 2 mm socket in handling part.

Technical data	
Diameter of plug system	2 mm
Rated Values	30 V, 10 A / 60 V, 10 A
Surface treatment electrical contact	Ni
Base material electrical contact	CuZn
Standard color(s) *	21 22 23 24 25
Optional color(s)	28 29
Plug spacing	12 mm
Suitable for	BL2-12/20/A
Test accessory acc. to	IEC EN 61010-031