

WeldFix

Circular primary circuit connectors | Welding automation

EN



STÄUBLI ELECTRICAL CONNECTORS

Long-term solutions – Expert connections



Stäubli Electrical Connectors is a leading international manufacturer of high-quality electrical contacts and connector systems and solutions for industrial applications. We are part of the Stäubli mechatronics group, the technology leader in connection solutions, robotics and textile machinery.

Stäubli develops, produces, sells and services products for markets with the highest productivity and safety standards. As recognized specialists, our focus is always on solutions and customers. Many new developments got their start here and are now becoming established as worldwide standards.

Our customers depend on our expertise and our active support, even when dealing with unusual challenges. With Stäubli, you're entering into a long-term partnership built on reliability, dedication, and exceptional quality in both products and services.

Pioneering contact technology for increased efficiency

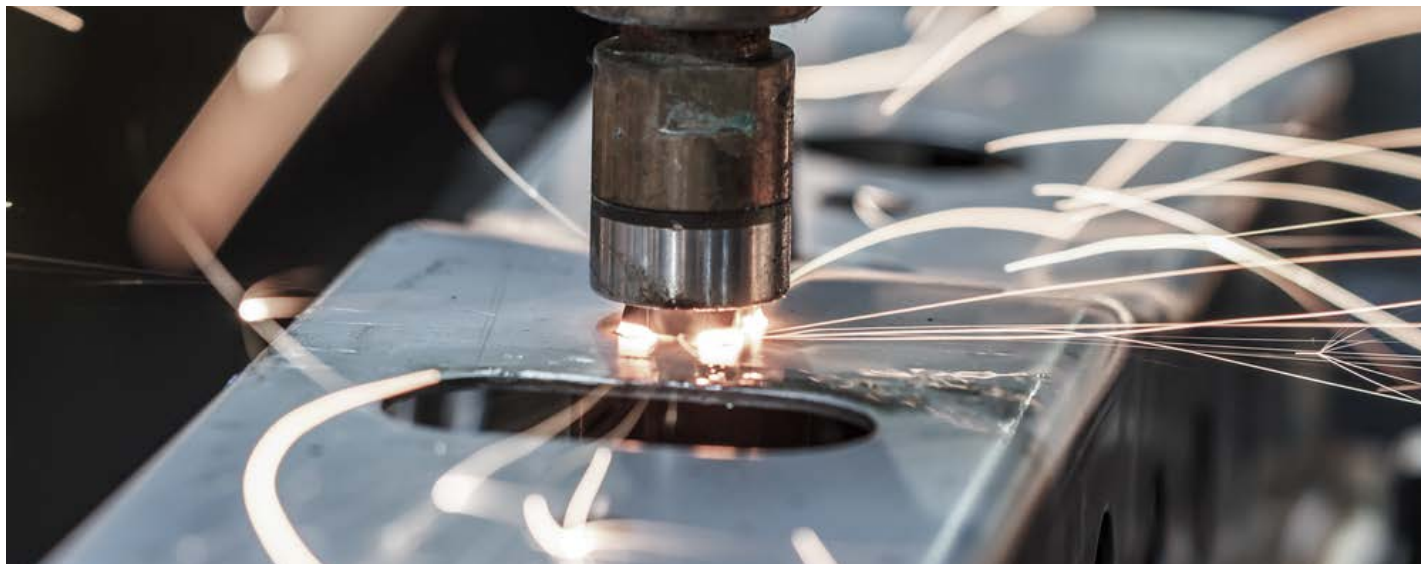
The entire Stäubli Electrical Connectors product range meets market expectations for high performance, the highest number of mating cycles, and long-lasting reliability for safe, durable operation. Our proven **MULTILAM technology** is ideal for all types of connections in industrial applications. Customers in the **power transmission and**

distribution sector rely on our consistent, loss-free transmission performance in all voltage ranges. The **automotive industry** depends on our high-efficiency connections for spot-welding applications in production lines. Harsh conditions in the **transportation sector** require high vibration resistance, maximum reliability, and compact design. These attributes are vitally important for railway and e-mobility applications. The safety

and reliability of our products are essential for **test and measurement technology.**

In the growing field of **alternative energy**, our products have been setting standards since the 1990s. About half of the solar energy generated worldwide is transmitted through safe, long-lasting, high-performance Stäubli connectors.

Applications and benefits – WeldFix



Stäubli connectors (previously Multi-Contact MC) have been established for decades and set an international standard especially in the body shops of well-known automotive manufacturers and their suppliers. Stäubli primary circuit connectors WeldFix are used in welding robots, manual welding guns, stationary guns (ped. welders) and tool changers. They are characterized by their small size and high performance. With these connectors, the connection lines from the weld controller along the robot arm to the welding transformer can be divided into different sections. The same interfaces on transformers, weld timers and robot axis enable users:

- Time savings and guaranteed safety when building production lines thanks to pluggable solutions
- Fast and safe replacements due to low error rates (first make last break) and reverse polarity protection)
- Solutions for all primary circuit supply segments
- Complete, consistent program in 3 power classes with different conductor cross-sections
- Low storage costs due to standardized interfaces on the cable assemblies and robot dresspacks.
- High current-carrying capacity and unparalleled contact reliability thanks to Stäubli MULTILAM contact strip technology

For end plug insulation, heat-shrinkable form shrouds or end housings with cable glands for axial or 90° cable outlets are used (see accessories).

Contacts can be crimped or screwed. It is also possible to attach pilot contacts for control lines. Specially developed Stäubli crimping dies ensure low and long-term stable contact resistance and are thus low-energy and environmentally friendly.

The 3- to 5-pole solutions comply with ISO 10656 and other regulations (Resistance welding – Transformers – Integrated transformers for welding guns).

Table of contents

| | | | |
|----------------|--|----------------|---|
| Page 6 | Application overview <ul style="list-style-type: none"> • Typical Range of Applications | Page 64 | Installation tools <ul style="list-style-type: none"> • Insertion and extraction tools • Crimping pliers case CZK2-... • Manual crimping pliers |
| Page 8 | WeldFix-Type overview and plug combinations <ul style="list-style-type: none"> • Ø 6 mm up to 139 A max. • Ø 8 mm up to 206 A max. • Ø 12 mm up to 325 A max. | Page 68 | Appendix <ul style="list-style-type: none"> • Derating diagrams • Technical data • Technical notes • Index |
| Page 12 | WeldFix-Welding transformer connector 3-pole <ul style="list-style-type: none"> • Panel mount housing, receptacles and adapter plates (supply side) <ul style="list-style-type: none"> • Ø 6 mm • Ø 8 mm • Ø 12 mm | | |
| Page 21 | WeldFix-Connector 3-pole supply side <ul style="list-style-type: none"> • Socket receptacle, connector plug <ul style="list-style-type: none"> • Ø 6 mm • Ø 8 mm • Ø 12 mm | | |
| Page 30 | WeldFix-Circuit connector 3-pole consumer side <ul style="list-style-type: none"> • Pins receptacle <ul style="list-style-type: none"> • Ø 6 mm • Ø 8 mm • Ø 12 mm | | |
| Page 38 | WeldFix-Frequency converter connector 3-pole <ul style="list-style-type: none"> • Supply side • Receptacles <ul style="list-style-type: none"> • Ø 6 mm • Ø 8 mm • Ø 12 mm | | |
| Page 42 | WeldFix-Frequency converter connector 4-pole <ul style="list-style-type: none"> • supply and consumer side • Receptacle and receptacles <ul style="list-style-type: none"> • Ø 8 mm | | |
| Page 49 | WeldFix-Frequency converter connector 5-pole <ul style="list-style-type: none"> • supply and consumer side • Receptacle and receptacles <ul style="list-style-type: none"> • Ø 8 mm | | |

General information

Changes/reservations

All data, illustrations and drawings in this catalog are the result of careful testing. They correspond to our experiences. Errors and omissions excepted. We also reserve the right to make changes for design and safety reasons. It is therefore advisable not to rely exclusively on the catalog data for designs that incorporate our components, but to consult us to ensure that the most recent data is used. We are happy to assist you.

Copyright

Further use of this catalog in any form without our prior written permission is not permitted.

RoHS ready

EU directive 2011/65 on the restriction of the use of certain hazardous materials for electrical and electronic devices.

Symbols



This product includes accessories or special tools



Assembly instructions MA000 are available for this product

Range of applications overview



Control cabinet
Frequency converter
Weld controller



Dresspacks
Welding robots



Robotic
welding guns



Automatic tool changer



Stationary
welding guns



Manual
welding guns

APPLICATION OVERVIEW

WeldFix – Typical Range of Applications

Welding transformer male connector 3-pole

- TAG135, TAG150, TAG250, TJID150, TID150, TID150-S8/M8, TID150-SP8, TID-S6/M5, AB-GEH/TID150...

Page 12

Female connector (3-pole)

- TSB, TSB150, TSB150-UR, TJSB150, TSB250

Page 21

Male connector (3-pole)

- TSS, TSS150, TSS150-UR, TSS250...

Page 30

Weld controller female connector (3-pole)

- TID-B, TIDB150, TID-B250

Page 38

Weld controller connector (4-pole)

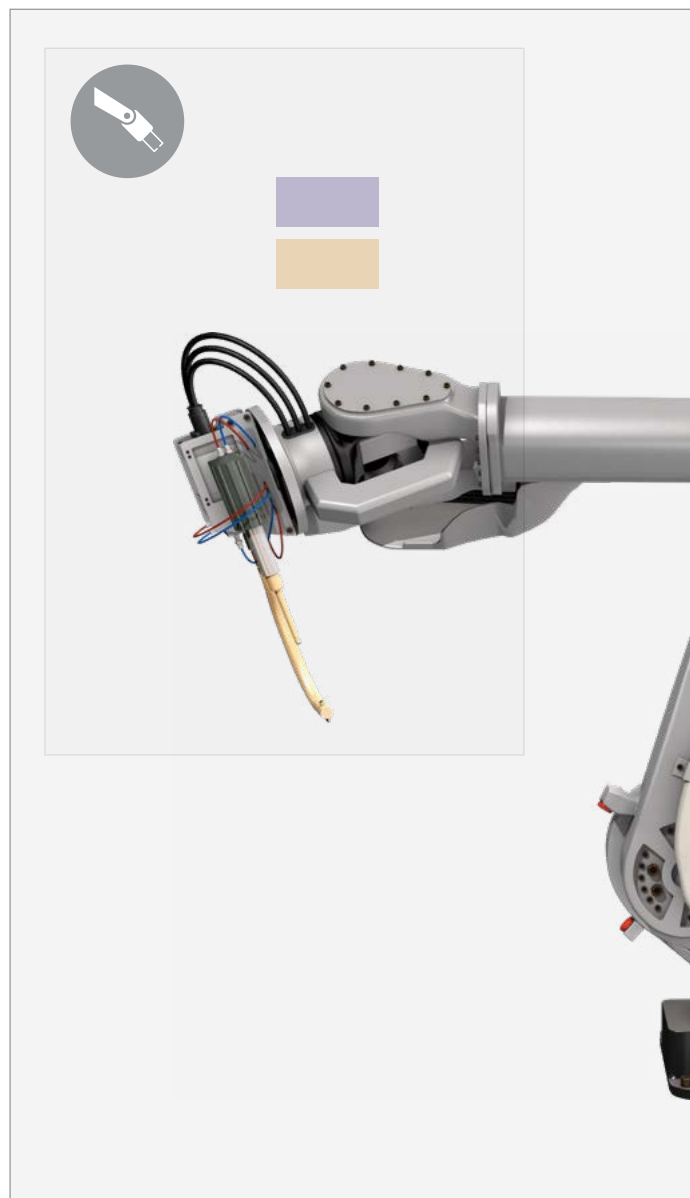
- TSB150/3, TID-B150/3, TSS150/3, TID150/3-S8/M8

Page 42

Weld controller connector (5-pole)

- TSB150/2, TID-B150/2, TSS150/2, TID150/2-S8/M8

Page 49

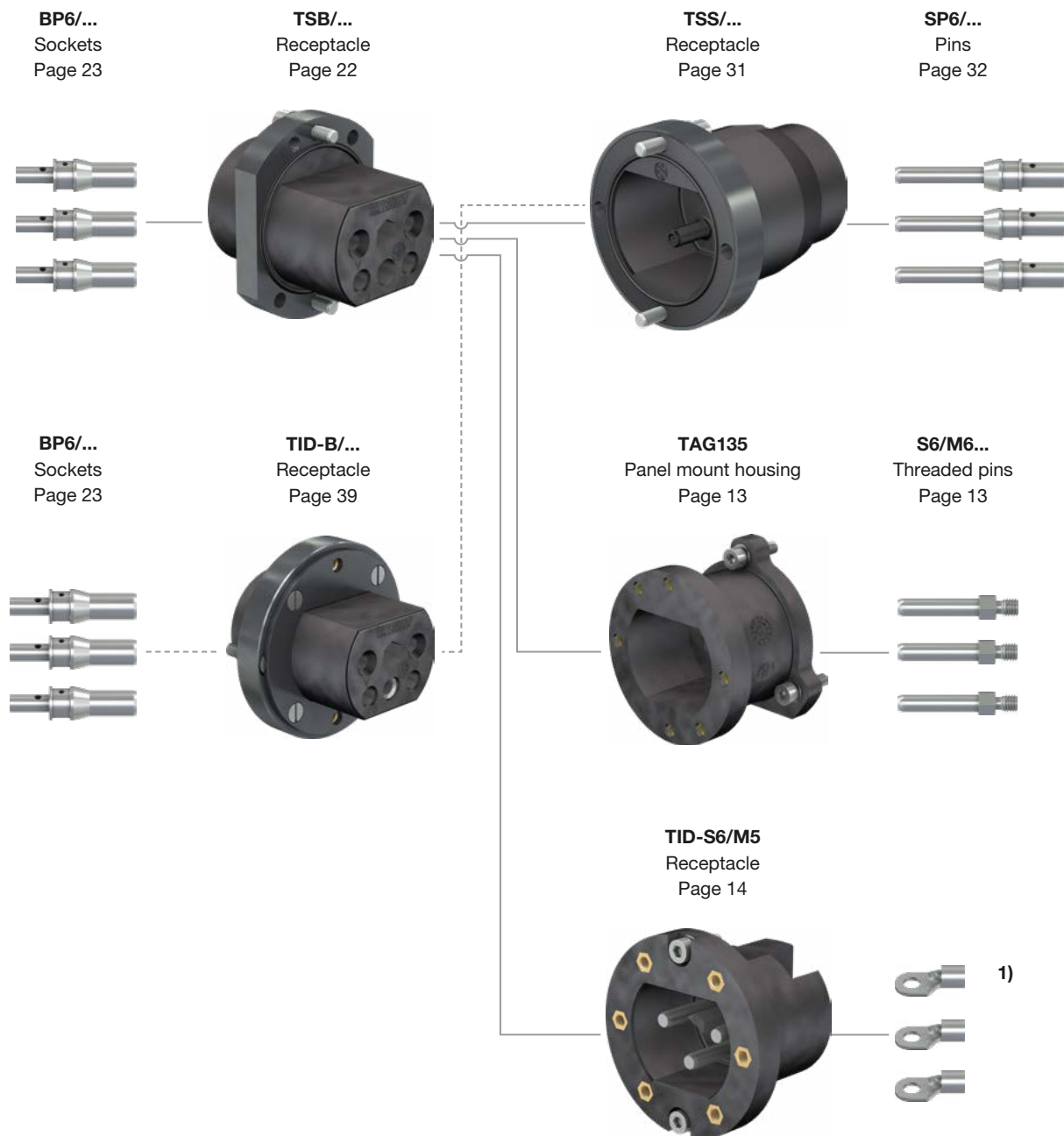




TYPE OVERVIEW AND PLUG COMBINATIONS

WeldFix 6 – Ø 6 mm contacts

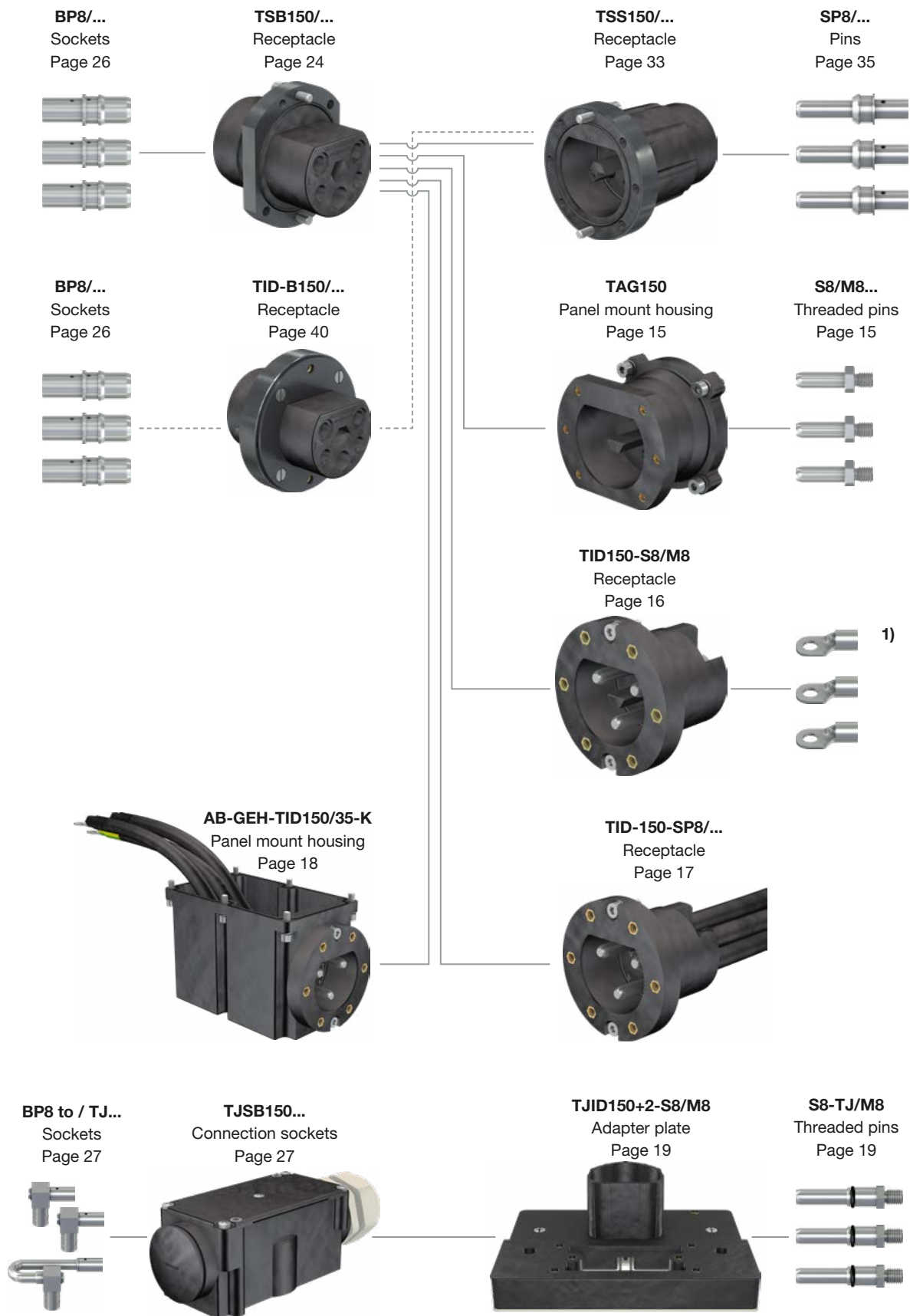
3-pole (2+PE), max. 139 A



¹⁾ Not included in delivery

WeldFix 8 – Ø 8 mm contacts

3-pole (2+PE), max. 206 A



WeldFix 8 – Ø 8 mm contacts

4-pole (3+PE), max. 196 A

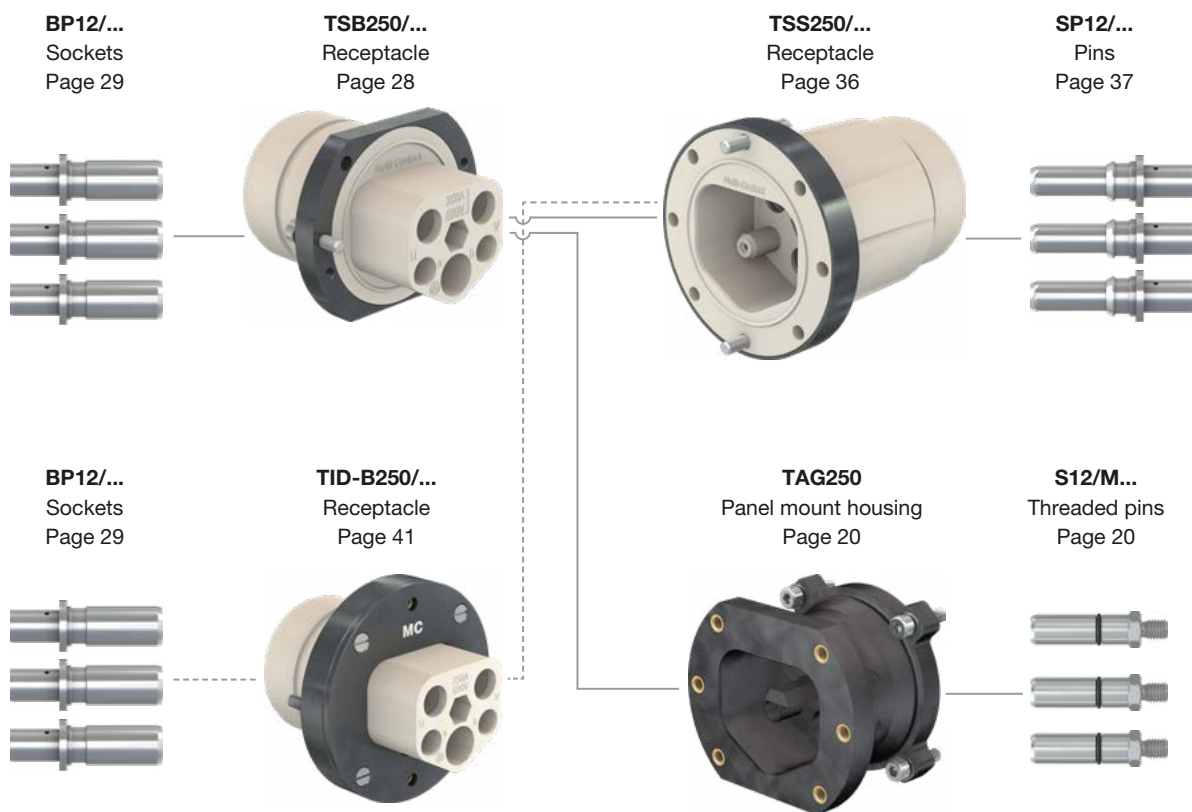


5-pole (3+N+PE), max. 196 A



WeldFix 12 – Ø 12 mm contacts

3-pole (2+PE), max. 325 A



WELDING TRANSFORMER CONNECTOR 3-POLE (2+PE)

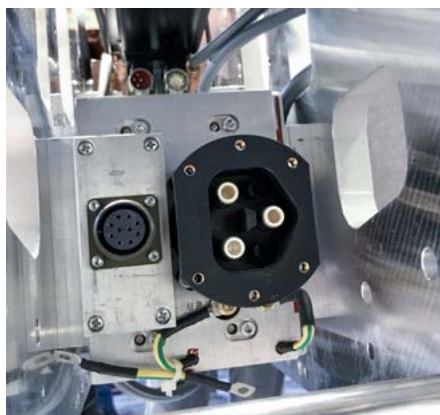
Welding Transformer Connector

This chapter describes the different options for connecting to welding transformers in spot-welding guns for automotive body shops.

Stäubli Electrical Connectors offers power supply solutions for welding all types of spot-welding guns such as end housings, prewired receptacles, junction boxes and adapter plates. These different options can be combined on the transformer side with threaded pins or cable lugs on the primary side of welding transformers. For additional safety, coding pins and pilot contacts are available.

With the WeldFix family's three sizes (Ø 6 mm, Ø 8 mm and Ø 12 mm) with up to 325 A continuous power for the primary side of spot-welding transformers, we can meet all your requirements.

Further solutions based on our offer for flat connectors such as RobiFix and RobiFix mini can be found in their respective catalogs.



Range of Application:



**Stationary
welding guns**



**Robotic
welding guns**



**Manual
welding guns**

WeldFix 6 – Ø 6 mm



Panel mount housing TAG135

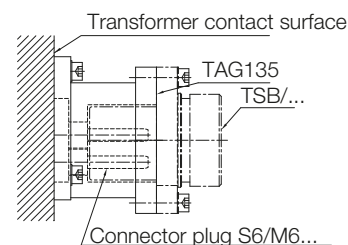
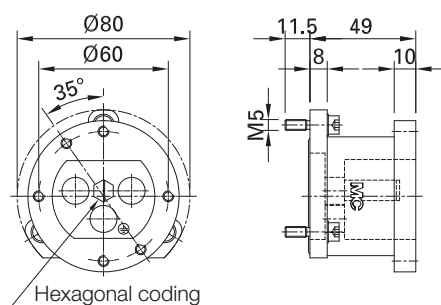
Panel mount housing for Ø 6 mm threaded pins (M6) for space-saving installation directly on the transformer head.

The supplied hexagonal coding ensures proper connection.

Note:

- max. 139 A (see deratings)

TAG135/M5X20



S6/M6-43



S6/M6-53



| Order No. | Type | Description | Length | Screw-in depth | Key width |
|-----------|--------------|--|--------|----------------|-----------|
| | | | mm | mm | mm |
| 15.0325 | TAG135/M5X20 | Panel mount housing with hexagonal coding, without threaded pins | | | |
| 04.0420 | S6/M6-43 | Threaded pins M6 | 43 | 8 | SW8 |
| 04.0423 | S6/M6-53 | | 53 | 8 | SW8 |

Spare parts

| | | | |
|---------|----------------|------------------|------------|
| 15.5331 | 6KT-KOD/TAG135 | Hexagonal coding | s. page 59 |
|---------|----------------|------------------|------------|

Accessories

| | | | |
|---------|-----------|----------------|------------|
| 15.0335 | SHZ-KP135 | Protective cap | s. page 61 |
|---------|-----------|----------------|------------|



Tools, page 64 – 67



Assembly instructions MA210

www.staubli.com/electrical

WeldFix 6 – Ø 6 mm

Receptacle TID-S6/M5

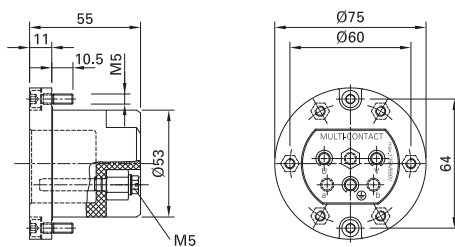


Receptacle for Ø 6 mm pins (pre-assembled) with M5 screw connection for cable lugs (not included in delivery).

Note:

- max. 139 A/25 mm² (see deratings)

TID-S6/M5



| Order No. | Type | Description | Contacts | | |
|-----------|-----------|----------------------|----------|-------------------------|--------------------|
| | | | Number | Conductor cross-section | Connection type |
| 15.0316 | TID-S6/M5 | Receptacle, equipped | 3 pins | 6 – 25 mm ² | Screws (cable lug) |

Accessories

| | | | |
|---------|------------------|-----------------------|------------|
| 30.5313 | 6KT-KOD/TID/S135 | Hexagonal coding | s. page 59 |
| 18.8008 | BP2/0.5-1.5 | Pilot contact socket | s. page 60 |
| 30.5312 | PKK-TID/S | Pilot contact chamber | s. page 60 |
| 15.0335 | SHZ-KP135 | Protective cap | s. page 61 |



Tools, page 64 – 67



Assembly instructions MA210

www.staubli.com/electrical

WeldFix 8 – Ø 8 mm



Panel mount housing TAG150

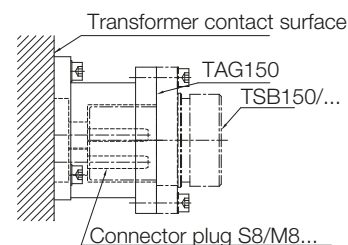
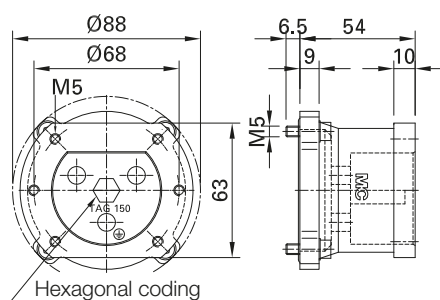
Panel mount housing for Ø 8 mm threaded pins for space-saving installation directly on the transformer head.

The supplied hexagonal coding ensures proper connection.

Note:

- max. 206 A (see deratings)

TAG150



S8/M8-41



S8/M8-57



| Order No. | Type | Description | Length | Screw-in depth | Key width |
|-----------|----------|---|--------|----------------|-----------|
| | | | mm | mm | mm |
| 30.0012 | TAG150 | Panel mount housing, with hexagonal coding, without threaded pins | | | |
| 30.0401 | S8/M8-41 | Threaded pins M8 | 41 | 10 | SW13 |
| 30.0403 | S8/M8-57 | | 57 | 10 | SW13 |

Accessories

| | | | |
|---------|----------------|-------------------------------|------------|
| 30.5322 | 6KT-KOD/TAG150 | Hexagonal coding (spare part) | s. page 59 |
| 30.0011 | SHZ-KP150 | Protective cap | s. page 61 |



Tools, page 64 – 67



Assembly instructions MA210

www.staubli.com/electrical

WeldFix 8 – Ø 8 mm

Receptacle TID150-S8/M8

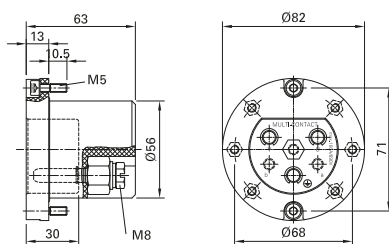
Receptacle for Ø 8 mm pins (pre-assembled) with M8 screw connection for cable lugs (not included in delivery). Pilot contact

socket and hexagonal coding optional for retrofitting.



Note:

- max. 206 A/50 mm² (see deratings)



| Order No. | Type | Description | Contacts | | |
|-----------|--------------|----------------------|----------|--|--------------------|
| | | | Number | Conductor cross-section mm ² | Connection type |
| 30.0019 | TID150-S8/M8 | Receptacle, equipped | 3 pins | 16 – 50 | Screws (cable lug) |

Accessories

| | | | |
|---------|------------------|-----------------------|------------|
| 30.5311 | 6KT-KOD/TID/S180 | Hexagonal coding | s. page 59 |
| 18.8008 | BP2/0.5-1.5 | Pilot contact socket | s. page 60 |
| 30.5312 | PKK-TID/S | Pilot contact chamber | s. page 60 |
| 30.0011 | SHZ-KP150 | Protective cap | s. page 61 |



Tools, page 64 – 67



Assembly instructions MA210

www.staubli.com/electrical

WeldFix 8 – Ø 8 mm

Receptacles, pre-wired TID150-S...



Pre-wired receptacle for Ø 8 mm pins with crimped, highly flexible, single-layered insulated conductor (LAPP KABEL H07V-K) for cable lugs per DIN 46234 or 46235.

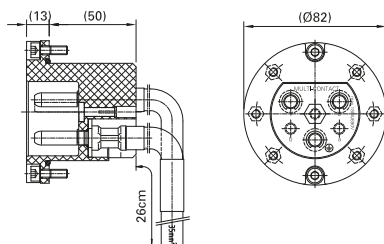
Pilot contact socket and hexagonal coding

optional for retrofitting (cable lugs not included in delivery).

Note:

- max. 206 A/50 mm² (see deratings)

TID150-SP8/...



| Order No. | Type | Description | Contacts | | |
|-------------|---------------------|---|----------|--|----------------------|
| | | | Number | Conductor cross-section mm ² | Connection type |
| 30.1001-026 | TID150-SP8/35/-/026 | Receptacle, pre-assembled with cable, 26 cm, 2 x black and 1 x green/yellow | 3 pins | 35 | Crimping (cable lug) |
| 30.1002-026 | TID150-SP8/50/-/026 | | 3 pins | 50 | |

Accessories

| | | | |
|---------|------------------|-----------------------|------------|
| 30.5311 | 6KT-KOD/TID/S180 | Hexagonal coding | s. page 59 |
| 18.8008 | BP2/0.5-1.5 | Pilot contact socket | s. page 60 |
| 30.5312 | PKK-TID/S | Pilot contact chamber | s. page 60 |
| 30.0011 | SHZ-KP150 | Protective cap | s. page 61 |



Tools, page 64 – 67



Assembly instructions MA225

www.staubli.com/electrical

WeldFix 8 – Ø 8 mm

Panel mount housing AB-GEH/TID150...

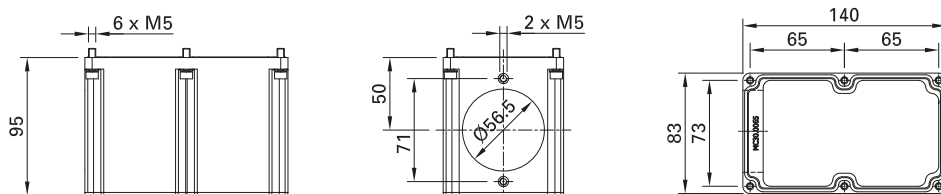


Flat panel mount housing with or without receptacle (TID150-SP8/..., s. page 17) for space-saving installation directly on the transformer head.
For Type K transformers.

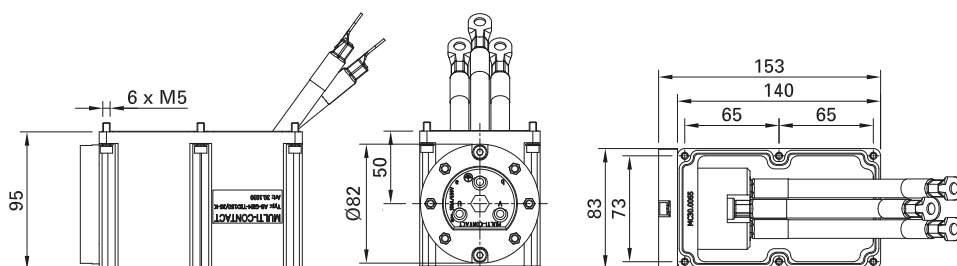
Note:

- max. 184 A/35 mm² (see deratings)

AB-GEH/TID150



AB-GEH-TID150/35-K



| Order No. | Type | Description | Contacts | | |
|-----------|--------------------|--|----------|----------------------------------|------------|
| | | | Number | Cross section mm ² | Connection |
| 30.0065 | AB-GEH/TID150 | Panel mount housing, empty | | | |
| 30.1030 | AB-GEH-TID150/35-K | Panel mount housing with receptacle TID150-SP8/35/-/026, pre-assembled | 3 pins | 35 | Cable lug |

Accessory (only for 30.1030)

| | | | |
|---------|------------------|-----------------------|------------|
| 30.5311 | 6KT-KOD/TID/S180 | Hexagonal coding | s. page 59 |
| 18.8008 | BP2/0.5-1.5 | Pilot contact socket | s. page 60 |
| 30.5312 | PKK-TID/S | Pilot contact chamber | s. page 60 |
| 30.0011 | SHZ-KP150 | Protective cap | s. page 61 |



Assembly instructions MA225

www.staubli.com/electrical



Tools, page 64 – 67

WeldFix 8 – Ø 8 mm

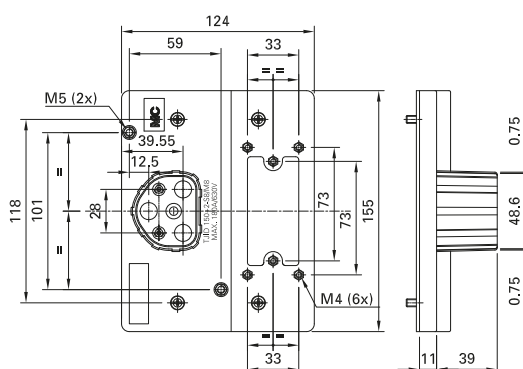
Adapter plate TJID150



Adapter plate for Ø 8 mm threaded pins, directly mounted on the transformer head. Compliant with standard ISO 10656 for Type J transformers.

An opening for signal wires enables installation of a bus distributor box. Two Ø 2 mm pilot contacts are integrated.

TJID150+2-S8/M8



S8-TJ/M8



| Order No. | Type | Description | Length | Screw-in depth | Key width |
|-----------|-----------------|---|--------|----------------|-----------|
| | | | mm | mm | mm |
| 19.6810 | TJID150+2-S8/M8 | Adapter plate, complete, including 3 x threaded pins M8 (19.6811 + 19.6709) | | | |
| 19.6811 | ITJID | Adapter plate, with pilot contact socket wired (~15 cm) | | | |
| 19.6709 | S8-TJ/M8 | Threaded pins M8 | 57 | 10 | SW13 |



Tools, page 64 – 67



Assembly instructions MA227

www.staubli.com/electrical

WeldFix 12 – Ø 12 mm

Panel mount housing TAG250



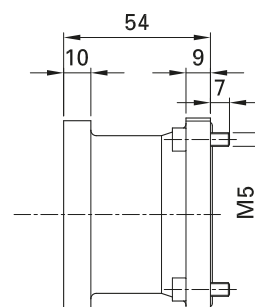
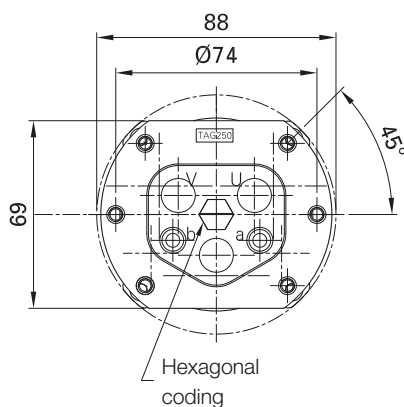
Panel mount housing for Ø 12 mm threaded pins (M8 or M10) for space-saving installation directly on the transformer head.

The hexagonal coding supplied prevents any risk of confusion when making connections.

Note:

- max. 325 A (see deratings)

TAG250



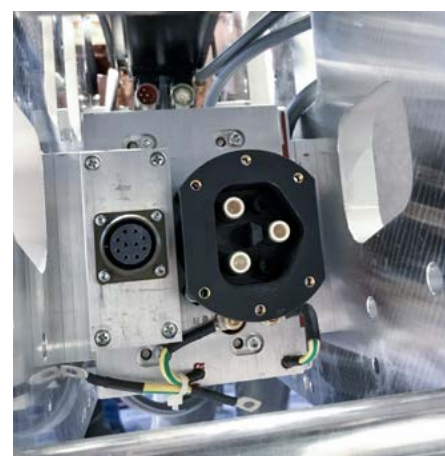
S12/M8-56



S12/M10-56



| Order No. | Type | Description | Length | Screw-in depth | Key width |
|-----------|------------|--|--------|----------------|-----------|
| | | | mm | mm | mm |
| 30.2050 | TAG250 | Panel mount housing with hexagonal coding, without threaded pins | | | |
| 30.0409 | S12/M8-56 | Threaded pins M8 | 56 | 11 | SW13 |
| 30.0410 | S12/M10-56 | Threaded pins M10 | 56 | 11 | SW13 |



Tools, page 64 – 67



Assembly instructions MA210

www.staubli.com/electrical

CIRCUIT CONNECTOR (SUPPLY SIDE) 3-POLE (2+PE)

Connectors

This chapter describes different options (2 + PE) mainly for connecting cable assemblies on spot-welding robots (J6, J3, J1) and various welding guns which are used in automotive body shops.

Stäubli Electrical Connectors offers extremely reliable welding power solutions for all kinds of dresspacks and spot-welding robots. The same standardized connectors are also used for the power supply of welding guns and automatic tool changers. The Ø 8 mm series (TSB150) is available for UR applications. The entire range is supplied

with additional accessories such as various strain reliefs, coding pins and pilot contacts for additional safety.

With three standard families of primary circuit circular connectors (Ø 6 mm, Ø 8 mm and Ø 12 mm), up to 325 A continuous current, we can meet all your requirements.

Further solutions based on our offer for flat connectors such as RobiFix and RobiFix mini can be found in special product sheets.



Range of Application



Cable assembly
Welding robots



Robotic
welding guns



Automatic tool
changer



Stationary
welding guns



Manual
welding guns

WeldFix 6 – Ø 6 mm

Receptacle TSB/...



Receptacle for Ø 6 mm sockets with crimping connection and first mate/last break ground contact.

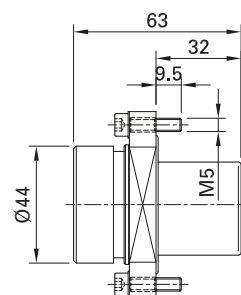
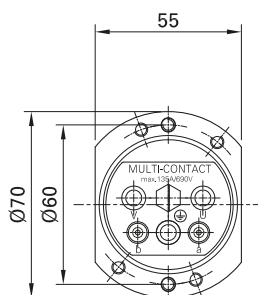
The rotatable mounting flange enables optimal positioning of the connector. Longitudinally watertight when unmated. Optional pilot contact pins and hexagonal coding.

Empty receptacles enable the use of different cable cross sections using corresponding individual contacts.

Note:

- max. 139 A/25 mm² (see deratings)

TSB...



| Order No. | Type | Description | Contacts | | |
|-----------|--------|-------------------|-------------|--|------------|
| | | | Number | Conductor cross-section mm ² | Connection |
| 15.0302 | TSB/16 | Receptacle | 3 sockets | 16 | Crimping |
| 15.0303 | TSB/25 | | 3 sockets | 25 | Crimping |
| 15.0305 | TSB/L | Receptacle, empty | see page 23 | – | – |

Accessories

| | | | |
|---------|-----------------|---|------------|
| 15.5168 | EG-TS-M40-135/3 | End housing | s. page 57 |
| 15.5027 | WST-TS | Heat-shrink part, straight | s. page 58 |
| 15.0399 | WST-WF6 | Heat-shrink part, straight, without inside adhesive | |
| 31.5300 | 6KT-KOD/A | Hexagonal coding | s. page 59 |
| 15.0335 | SHZ-KP135 | Protective cap | s. page 61 |
| 15.5043 | W-TS | Installation angle | s. page 62 |
| 18.5503 | MVS6 | Blind plugs | s. page 62 |



Tools, page 64 – 67



Assembly instructions MA200

www.staubli.com/electrical

Contacts for receptacle TSB/...

Ø 6 mm sockets with MULTILAM contact technology. Suitable for crimp connection for connection from 6 mm² to 25 mm².

Receptacles can be equipped with pilot contacts which, in critical cases, enable the interruption of the circuit.

BP6/...



SP2/0.5-1.5



| Order No. | Type | Description | Surface | Conductor cross-section | Rated current | Connection type |
|-----------|-------------|-------------------|---------|-------------------------|---------------|-----------------|
| | | | | mm ² | A | |
| 01.0440 | BP6/6 | Socket | Ag | 6 | 67 | Crimping |
| 01.0441 | BP6/10 | | | 10 | 94 | Crimping |
| 01.0442 | BP6/16 | | | 16 | 111 | Crimping |
| 01.0443 | BP6/25 | | | 25 | 139 | Crimping |
| 18.9008 | SP2/0.5-1.5 | Pilot contact pin | Ag | 0.5 – 1.5 | 16 | Crimping |



Tools, page 64 – 67



Assembly instructions MA200

www.staubli.com/electrical

WeldFix 8 – Ø 8 mm

Receptacle TSB150/...



Receptacle for Ø 8 mm sockets with screw or crimping connection (recommended) and first mate/last break ground contact. The rotatable mounting flange enables optimal positioning of the connector. Longitudinally watertight when unmated.

Optional pilot contact pins and hexagonal coding.

Empty receptacles enable the use of different cable cross sections using corresponding individual contacts.

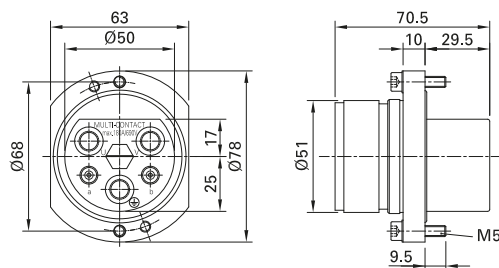
Note:

- Rated current max. 206 A/50 mm² (see deratings)
- Rated voltage max. 1000 V

TSB150/...



Mounting flange, rotatable



| Order No. | Type | Description | Contacts | | |
|-----------|-----------|-------------------|-------------|--|-----------------|
| | | | Number | Conductor cross-section mm ² | Connection type |
| 30.0000 | TSB150/25 | Receptacle | 3 sockets | 25 | Crimping |
| 30.0001 | TSB150/35 | | 3 sockets | 35 | Crimping |
| 30.0002 | TSB150/50 | | 3 sockets | 50 | Crimping |
| 30.0004 | TSB150/L | Receptacle, empty | see page 26 | – | Crimping/screws |

Accessories

| | | | |
|---------|-----------------|----------------------------|------------|
| 30.0018 | EG-TS-M50-150-3 | End housing | s. page 57 |
| 30.0021 | WST-TS/150 | Heat-shrink part, straight | s. page 58 |
| 31.5301 | 6KT-KOD/S | Hexagonal coding | s. page 59 |
| 30.0011 | SHZ-KP150 | Protective cap | s. page 61 |
| 15.5044 | W-TS/150 | Installation angle | s. page 62 |
| 18.5505 | MVS-8 | Blind plugs | s. page 63 |



Assembly instructions MA200

www.staubli.com/electrical



Tools, page 64 – 67

WeldFix 8 – Ø 8 mm

Receptacle TSB150/..., for UR requirements



Receptacle for Ø 8 mm sockets with crimping connection and first mate/last break ground contact. The rotatable mounting flange enables optimal positioning of the connector. Longitudinally watertight when unmated. Optional hexagonal coding.

Note:

- The plugs are permitted for use only with certain crimping tools (18.3700) and inserts (18.3703, 18.3712 and 18.3713), cable glands and cables as UR plugs. Pilot contacts are not permissible.

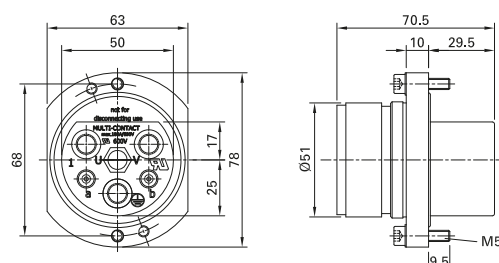
- Rated current max. 206 A/50 mm² (see deratings)
- Rated voltage max. 600 V (UR), otherwise max. 1000 V

TSB150/...



UR Type

Mounting flange, rotatable



| Order No. | Type | Description | Contacts | | | UL |
|------------|-----------|-------------------|-------------|--|-----------------|------------------------|
| | | | Number | Conductor cross-section mm ² | Connection type | |
| 30.0000-UR | TSB150/25 | Receptacle | 3 sockets | 25 | Crimping | UL file no. E251818 |
| 30.0001-UR | TSB150/35 | | 3 sockets | 35 | Crimping | |
| 30.0002-UR | TSB150/50 | | 3 sockets | 50 | Crimping | |
| 30.0004-UR | TSB150/L | Receptacle, empty | see page 26 | – | – | – |

Accessories

| | | | |
|---------|-----------------|----------------------------|------------|
| 30.0018 | EG-TS-M50-150-3 | End housing | s. page 57 |
| 30.0021 | WST-TS/150 | Heat-shrink part, straight | s. page 58 |
| 31.5301 | 6KT-KOD/S | Hexagonal coding | s. page 59 |
| 30.0011 | SHZ-KP150 | Protective cap | s. page 61 |
| 15.5044 | W-TS/150 | Installation angle | s. page 62 |
| 18.5505 | MVS-8 | Blind plugs | s. page 63 |



Assembly instructions MA200

www.staubli.com/electrical



Tools, page 64 – 67

WeldFix 8 – Ø 8 mm

Contacts for receptacle TSB150/...

Ø 8 mm sockets with MULTILAM contact technology.

Suitable for crimp connection (recommended) for connections from 16 mm² to 50 mm².

Sockets with screw connections are also available (16 mm² to 35 mm²).

Except for UR requirements, receptacles can be equipped with pilot contacts enabling the interruption of the circuit.

BP8/ ...



SP2/0.5-1.5



B8/16-35-SCH



| Order No. | Type | Description | Surface | Conductor cross-section | Rated current | Connection type |
|-----------|--------------|-------------------|---------|-------------------------|---------------|------------------|
| | | | | mm ² | A | |
| 30.0103 | BP8/16 | Socket | Ag | 16 | 125 | Crimping |
| 30.0100 | BP8/25 | | Ag | 25 | 167 | Crimping |
| 30.0101 | BP8/35 | | Ag | 35 | 184 | Crimping |
| 30.0102 | BP8/50 | | Ag | 50 | 206 | Crimping |
| 30.0200 | B8/16-35-SCH | | Ag | 16 – 35 | 125/167/184 | Screw connection |
| 18.9008 | SP2/0.5-1.5 | Pilot contact pin | Ag | 0.5 – 1.5 | max. 16 | Crimping |



Tools, page 64 – 67



Assembly instructions MA200

www.staubli.com/electrical

WeldFix 8 – Ø 8 mm

Connector plug TJSB150...



Ø 8 mm connector plug for conductor cross-section of 25 mm² or 35 mm² suitable for adapter plate TJID150. Space-saving design with only 80 mm installation height and left or right line output.

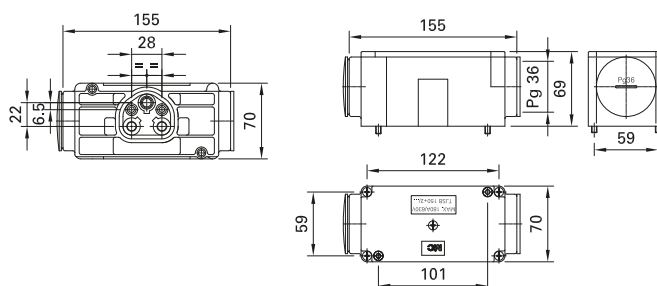
Cable connection not included in delivery.

Technical data:

- Rated current max. 150 A (35 mm²)
- Rated voltage max. 690 V
- Test voltage: 3.5 kV

- Insulation coordination kV/3: 6
- Degree of protection: IP56 in mated state
- Temperature range: -40°C to +100°C

TJSB150...



| Order No. | Type | Description | Contacts | | |
|-----------|--------------|--|------------|--|-----------------|
| | | | Number | Conductor cross-section ¹⁾ mm ² | Connection type |
| 19.6809 | TJSB150+2/25 | Connector plug, complete with pilot contact pins | 5 contacts | 25 0.5 – 1.5 (signal leads) | Crimping |
| 19.6812 | TJSB150+2/35 | | 5 contacts | 35 0.5 – 1.5 (signal leads) | Crimping |
| 19.6813 | TJSB150/35 | Connector plug, complete, without pilot contact pins | 3 sockets | 35 | Crimping |
| 19.6814 | TJSB150/25 | | 3 sockets | 25 | Crimping |
| 19.7506 | I-TJSB | Housing, empty | See below | – | Crimping |

Socket BP8...-TJ/... for connector plug TJSB150...

BP8-TJ/...



BP8W-TJ/...



SP2-TJ/0.5-1.5



| Order No. | Type | Description | Contacts | |
|-----------|----------------|-------------------|--|-----------------|
| | | | Conductor cross-section mm ² | Connection type |
| 19.6707 | BP8-TJ/25 | Socket, straight | 25 | Crimping |
| 19.6712 | BP8-TJ/35 | | 35 | Crimping |
| 19.6706 | BP8W-TJ/25 | Socket, bent | 25 | Crimping |
| 19.6711 | BP8W-TJ/35 | | 35 | Crimping |
| 19.6708 | SP2-TJ/0.5-1.5 | Pilot contact pin | 0.5 – 1.5 | Crimping |



Assembly instructions MA228

www.staubli.com/electrical



Tools, page 64 – 67

¹⁾ 50 mm² upon request

WeldFix 12 – Ø 12 mm

Receptacle TSB250/...



Receptacle for Ø 12 mm sockets with crimping connection and first mate/last break ground contact.

The rotatable mounting flange enables optimal positioning of the connector.

Longitudinally watertight when unmated. Optional pilot contact pins and hexagonal coding.

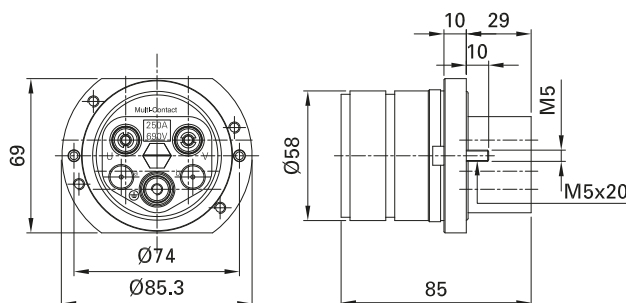
Note:

- Empty receptacles enable the use of different cable cross sections using corresponding individual contacts.
- max. 325 A/95 mm² (see deratings)

TSB250/...



Mounting flange, rotatable



| Order No. | Type | Description | Contacts | | |
|-----------|-----------|-------------------|-------------|--|-----------------|
| | | | Number | Conductor cross-section mm ² | Connection type |
| 30.2001 | TSB250/35 | Receptacle | 3 sockets | 35 | Crimping |
| 30.2002 | TSB250/50 | | 3 sockets | 50 | Crimping |
| 30.2003 | TSB250/70 | | 3 sockets | 70 | Crimping |
| 30.2004 | TSB250/95 | | 3 sockets | 95 | Crimping |
| 30.2005 | TSB250/L | Receptacle, empty | see page 29 | – | Crimping |

Accessories

| | | | |
|--------------|-------------------|--------------------|------------|
| 30.0063 | EG-TS-M50-150-4/5 | End housing | s. page 57 |
| 30.0066 | EG-TS-M63 | | |
| 30.5311 | 6KT-KOD/TID/S180 | Hexagonal coding | s. page 59 |
| 30.2030 | SHZ-KP250 | Protective cap | s. page 61 |
| 30.0064 | W-TS/250 | Installation angle | s. page 62 |
| Upon request | MVS12 | Blind plugs | s. page 63 |



Tools, page 64 – 67



Assembly instructions MA200

www.staubli.com/electrical

WeldFix 12 – Ø 12 mm

Contacts for receptacle TSB250/...

Ø 12 mm sockets with MULTILAM contact technology. Suitable for crimp connection for connection from 35 mm² to 95 mm².

Note:

- Power contacts are touch protected.
- Receptacles can be equipped with pilot

contacts which, in critical cases, enable the interruption of the circuit.

BP12/...



SP2/0.5-1.5



BP12/... PE



| Order No. | Type | Description | Surface | Conductor cross-section | Rated current | Connection type |
|-----------|-------------|---|---------|-------------------------|---------------|-----------------|
| | | | | mm ² | A | |
| 30.0104 | BP12/35 | Power socket | Ag | 35 | 206 | Crimping |
| 30.0105 | BP12/50 | | | 50 | 247 | Crimping |
| 30.0106 | BP12/70 | | | 70 | 287 | Crimping |
| 30.0107 | BP12/95 | | | 95 | 325 | Crimping |
| 30.0108 | BP12/35 PE | first mate/last break ground contact socket | Ag | 35 | – | Crimping |
| 30.0109 | BP12/50 PE | | | 50 | – | Crimping |
| 30.0110 | BP12/70 PE | | | 70 | – | Crimping |
| 30.0111 | BP12/95 PE | | | 95 | – | Crimping |
| 18.9008 | SP2/0.5-1.5 | Pilot contact pin | Ag | 0.5 – 1.5 | max. 16 | Crimping |



Tools, page 64 – 67



Assembly instructions MA200

www.staubli.com/electrical

MALE CONNECTOR 3-POLE (2+PE)

Connectors

This chapter describes different options for connecting dresspacks of spot-welding robots (J3, J1) and welding controllers used in automotive body shops.

Stäubli Electrical Connectors offers extremely reliable welding power solutions for all kinds of dresspacks. The same standardized connectors are also used for connecting welding connectors with spot-welding robots. The Ø 8 mm series (TSS150) is available for UR applications. The entire range can be supplied with additional accessories such as various strain reliefs, coding pins and pilot contacts for additional safety.

With three standard families of primary circuit circular connectors (Ø 6 mm, Ø 8 mm and Ø 12 mm), up to 325 A continuous current, we can meet all your requirements.

Further solutions based on our offer for flat connectors such as RobiFix and RobiFix mini can be found in their respective catalogs.



Range of Application:



Cable assembly
Welding robots



Frequency converter

WeldFix 6 – Ø 6 mm



Receptacle TSS/...

Receptacle for Ø 6 mm pins with crimping connection.

The rotatable mounting flange enables optimal positioning of the connector.

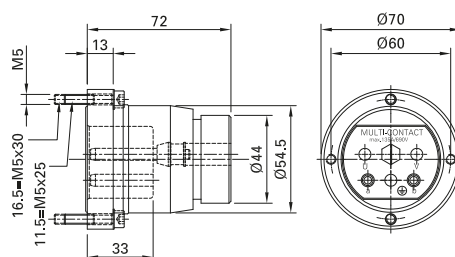
Longitudinally watertight when unmated.

Optional pilot contact socket and hexagonal coding.

Note:

- Empty receptacles enable the use of different cable cross sections using corresponding individual contacts

TSS/...



| Order No. | Type | Description | Contacts | | |
|-----------------------|-------------|-------------------|-------------|--|-----------------|
| | | | Number | Conductor cross-section mm ² | Connection type |
| 15.0308 | TSS/16 | Receptacle | 3 pins | 16 | Crimping |
| 15.0309 | TSS/25 | | 3 pins | 25 | Crimping |
| 15.0310 | TSS/L-M5X25 | Receptacle, empty | see page 32 | - | Crimping |
| 15.0318 ¹⁾ | TSS/L-M5X30 | | | - | Crimping |

Accessories

| | | | |
|---------|-----------------|---|------------|
| 15.5168 | EG-TS-M40-135/3 | End housing | s. page 57 |
| 15.5027 | WST-TS | Heat-shrink part, straight | s. page 58 |
| 15.0399 | WST-WF6 | Heat-shrink part, straight, without inside adhesive | |
| 31.5300 | 6KT-KOD/A | Hexagonal coding | s. page 59 |
| 15.0335 | SHZ-KP135 | Protective cap | s. page 61 |
| 15.5043 | W-TS | Installation angle | s. page 62 |
| 18.5503 | MVS6 | Blind plugs | s. page 63 |



Tools, page 64 – 67



Assembly instructions MA200

www.staubli.com/electrical

¹⁾ Order this type if mounting screws M5x30 are required, standard M5x25 are mounted

WeldFix 6 – Ø 6 mm

Contacts for Receptacle TSS/...

Ø 6 mm pins, silver-plated, suitable for crimp connection for connection from 6 mm² to 25 mm².

Pilot contact can be added for signal leads. They provide greater safety which, by enabling the interruption of the circuit.

SP...



BP2/0.5-1.5



| Order No. | Type | Description | Surface | Conductor cross-section | Rated current | Connection type |
|-----------|-------------|----------------------|---------|-------------------------|---------------|-----------------|
| | | | | mm ² | A | |
| 05.0440 | SP6/6 | Pin | Ag | 6 | 67 | Crimping |
| 05.0441 | SP6/10 | | Ag | 10 | 94 | Crimping |
| 05.0442 | SP6/16 | | Ag | 16 | 111 | Crimping |
| 05.0443 | SP6/25 | | Ag | 25 | 139 | Crimping |
| 18.8008 | BP2/0.5-1.5 | Pilot contact socket | Ag | 0.5 – 1.5 | max. 16 | Crimping |



Tools, page 64 – 67



Assembly instructions MA200

www.staubli.com/electrical

WeldFix 8 – Ø 8 mm

Receptacle TSS150/...



Receptacle for Ø 8 mm sockets with screw or crimping termination (recommended).

The rotatable mounting flange enables optimal positioning of the connector.

Longitudinally watertight when unmated.

Optional pilot contact socket and hexagonal coding.

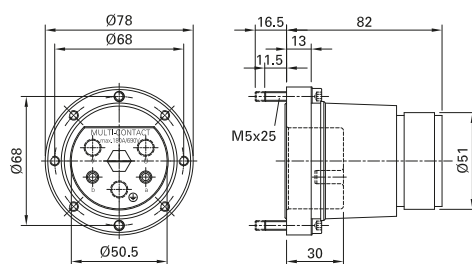
Note:

- Empty receptacles enable the use of different cable cross sections using corresponding individual contacts.

TSS150/L M5x25



Mounting flange, rotatable



| Order No. | Type | Description | Mounting screws | Contacts | | |
|-----------|----------------|----------------------|-----------------|-------------|--|-----------------|
| | | | | Number | Conductor cross-section mm ² | Connection type |
| 30.0005 | TSS150/25 | Receptacle, equipped | M5 x 25 mm | 3 pins | 25 | Crimping |
| 30.0006 | TSS150/35 | | | 3 pins | 35 | Crimping |
| 30.0007 | TSS150/50 | | | 3 pins | 50 | Crimping |
| 30.0009 | TSS150/L M5X25 | Receptacle, empty | M5 x 25 mm | see page 35 | – | Crimping/screws |
| 30.0010 | TSS150/L M5X30 | | M5 x 30 mm | – | Crimping/screws | |

Accessories

| | | | |
|---------|-----------------|----------------------------|------------|
| 30.0018 | EG-TS-M50-150-3 | End housing | s. page 57 |
| 30.0021 | WST-TS/150 | Heat-shrink part, straight | s. page 58 |
| 31.5301 | 6KT-KOD/S | Hexagonal coding | s. page 59 |
| 30.0011 | SHZ-KP150 | Protective cap | s. page 61 |
| 15.5044 | W-TS/150 | Installation angle | s. page 62 |
| 18.5505 | MVS8 | Blind plugs | s. page 63 |



Tools, page 64 – 67



Assembly instructions MA200

www.staubli.com/electrical

WeldFix 8 – Ø 8 mm



Receptacle TSS150/... for UR applications

Receptacle for Ø 8 mm sockets with crimping connection.

The rotatable mounting flange enables optimal positioning of the connector.

Longitudinally watertight when unmated. Optional hexagonal coding.

Note:

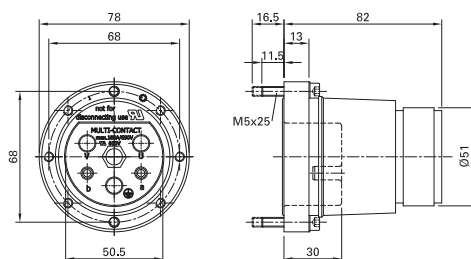
The plugs are permitted for use only with certain crimping tools (18.3700) and inserts (18.3703, 18.3712 and 18.3713), cable glands and cables as UR plugs. Pilot contacts are not permissible.

TSS150/...



UR Type

Mounting flange, rotatable



| Order No. | Type | Description | Mounting screws | Contacts | | | UL |
|------------|----------------|----------------------|-----------------|-------------|--|-----------------|---------------------|
| | | | | Number | Conductor cross-section mm ² | Connection type | |
| 30.0005-UR | TSS150/25 | Receptacle, equipped | M5 x 25 mm | 3 pins | 25 | Crimping | UL file no. E251818 |
| 30.0006-UR | TSS150/35 | | | 3 pins | 35 | Crimping | |
| 30.0007-UR | TSS150/50 | | | 3 pins | 50 | Crimping | |
| 30.0009-UR | TSS150/L M5X25 | Receptacle, empty | M5 x 25 mm | see page 35 | - | Crimping/screws | |
| 30.0010-UR | TSS150/L M5X30 | | M5 x 30 mm | - | Crimping/screws | - | |

Accessories

| | | | |
|---------|-----------------|----------------------------|------------|
| 30.0018 | EG-TS-M50-150-3 | End housing | s. page 57 |
| 30.0021 | WST-TS/150 | Heat-shrink part, straight | s. page 58 |
| 31.5301 | 6KT-KOD/S | Hexagonal coding | s. page 59 |
| 30.0011 | SHZ-KP150 | Protective cap | s. page 61 |
| 15.5044 | W-TS/150 | Installation angle | s. page 62 |



Tools, page 64 – 67



Assembly instructions MA200

www.staubli.com/electrical

WeldFix 8 – Ø 8 mm

Contacts for receptacle TSS150/...

Ø 8 mm pins, silver-plated. Suitable for crimp connection (recommended) for connections from 16 mm² to 50 mm². Pins with screw connections are also available.

Pilot contact can be added for control lines. They provide greater safety which, in critical cases, enables the interruption of the circuit.

SP8/...



BP2/0.5-1.5



S8/16-35-SCH



| Order No. | Type | Description | Surface | Conductor cross-section | Rated current | Connection type |
|-----------|--------------|--|---------|-------------------------|---------------|-----------------|
| | | | | mm ² | A | |
| 30.0503 | SP8/16 | Pin | Ag | 16 | 125 | Crimping |
| 30.0500 | SP8/25 | | Ag | 25 | 167 | Crimping |
| 30.0501 | SP8/35 | | Ag | 35 | 184 | Crimping |
| 30.0502 | SP8/50 | | Ag | 50 | 206 | Crimping |
| 30.0600 | S8/16-35-SCH | | Ag | 16 – 35 | 125/167/184 | Screws |
| 18.8008 | BP2/0.5-1.5 | Signal contact socket (not for UR applications) | Ag | 0.5 – 1.5 | 16 | Crimping |



Tools, page 64 – 67



Assembly instructions MA200

www.staubli.com/electrical

WeldFix 12 – Ø 12 mm

Receptacle TSS250/...



Receptacle for Ø 12 mm pins with crimping connection. The rotatable mounting flange enables optimal positioning of the connector. Longitudinally watertight when unmat-

ed. Optional pilot contact pins and hexagonal coding.

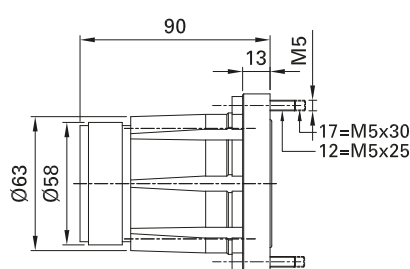
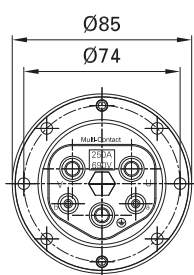
Note:

Empty receptacles enable the use of different cable cross sections using corresponding individual contacts.

TSS250/...



Mounting flange, rotatable



| Order No. | Type | Description | Contacts | | |
|-----------|-----------|-------------------|-------------|-------------------------|-----------------|
| | | | Number | Conductor cross-section | Connection type |
| | | | | mm ² | |
| 30.2006 | TSS250/35 | Receptacle | 3 pins | 35 | Crimping |
| 30.2007 | TSS250/50 | | 3 pins | 50 | Crimping |
| 30.2008 | TSS250/70 | | 3 pins | 70 | Crimping |
| 30.2009 | TSS250/95 | | 3 pins | 95 | Crimping |
| 30.2010 | TSS250/L | Receptacle, empty | see page 37 | – | Crimping |

Accessories

| | | | |
|--------------|-------------------|----------------------------|------------|
| 30.0063 | EG-TS-M50-150-4/5 | End housing | s. page 57 |
| 30.0066 | EG-TS-M63 | | |
| 30.0021 | WST-TS/150 | Heat-shrink part, straight | s. page 58 |
| 30.5311 | 6KT-KOD/TID/S180 | Hexagonal coding | s. page 59 |
| 30.2030 | SHZ-KP250 | Protective cap | s. page 61 |
| 30.0064 | W-TS/250 | Installation angle | s. page 62 |
| Upon request | MVS12 | Blind plugs | s. page 63 |



Tools, page 64 – 67



Assembly instructions MA200

www.staubli.com/electrical

WeldFix 12 – Ø 12 mm

Contacts for receptacle TSS250/...

Ø 12 mm pins, silver-plated.

Suitable for crimp connection for connection from 35 mm² to 95 mm².

SP12/...



BP2/0.5-1.5



| Order No. | Type | Description | Surface | Conductor cross-section | Rated current | Connection type |
|-----------|-------------|-----------------------|---------|-------------------------|---------------|-----------------|
| | | | | mm ² | A | |
| 30.0508 | SP12/35 | Pin | Ag | 35 | 206 | Crimping |
| 30.0509 | SP12/50 | | | 50 | 247 | |
| 30.0510 | SP12/70 | | | 70 | 287 | |
| 30.0511 | SP12/95 | | | 95 | 325 | |
| 18.8008 | BP2/0.5-1.5 | Signal contact socket | Ag | 0.5 – 1.5 | 16 | Crimping |



Tools, page 64 – 67



Assembly instructions MA200

www.staubli.com/electrical

WELD CONTROLLER CONNECTOR 3-POLE (2+PE)

Weld controller connector

This chapter describes receptacles (2+PE) for connecting welding controller cabinets of spot-welding guns in automotive body shops.

Stäubli Electrical Connectors offers extremely reliable power supply solutions for welding different types of welding controllers. Similarly standardized connectors are used for connecting robotized, manual or stationary spot-welding guns. The entire range is supplied with additional accessories such as coding pins and pilot contacts for additional safety.

With three standard families of primary circuit circular connectors (Ø 6 mm, Ø 8 mm and Ø 12 mm), up to 325 A continuous current, we can meet all your requirements.

Further solutions based on our offer for flat connectors such as RobiFix and RobiFix mini can be found in their respective catalogs..



Range of use:



Frequency converter

WeldFix 6 – Ø 6 mm

Receptacle TID-B/...

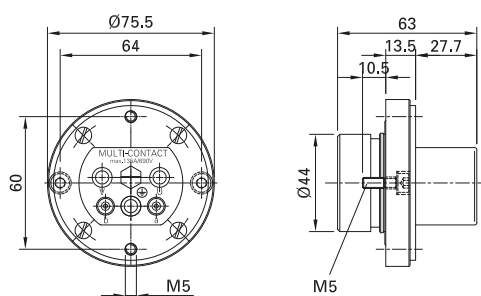


Receptacle for Ø 6 mm sockets with crimping connection.
To 25 mm².

Note:

- max. 139 A/25 mm² (see deratings)

TID-B/...



| Order No. | Type | Description | Contacts | | |
|-----------|----------|-------------------|-------------|--|-----------------|
| | | | Number | Conductor cross-section mm ² | Connection type |
| 15.0322 | TID-B/16 | Receptacle | 3 sockets | 16 | Crimping |
| 15.0323 | TID-B/25 | | 3 sockets | 25 | Crimping |
| 15.0324 | TID-B/L | Receptacle, empty | see page 22 | – | Crimping |

Accessories

| | | | |
|---------|-----------------|---|------------|
| 15.5168 | EG-TS-M40-135/3 | End housing | s. page 57 |
| 15.5027 | WST-TS | Heat-shrink part, straight | s. page 58 |
| 15.0399 | WST-WF6 | Heat-shrink part, straight, without inside adhesive | |
| 31.5300 | 6KT-KOD/A | Hexagonal coding | s. page 59 |
| 15.0335 | SHZ-KP135 | Protective cap | s. page 61 |
| 18.5503 | MVS6 | Blind plugs | s. page 63 |



Tools, page 64 – 67



Assembly instructions MA201

www.staubli.com/electrical

WeldFix 8 – Ø 8 mm

Receptacle TID-B150/...



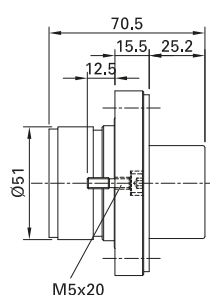
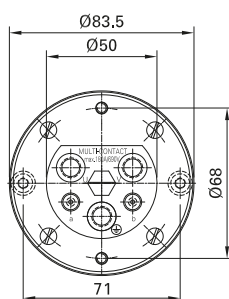
Receptacle for Ø 8 mm sockets with crimping connection to 50 mm² or socket connections for 16 mm² to 35 mm², if necessary. A hexagonal coding (31.5301) is included on

delivery and prevents any risk of confusion when making connections.

Note:

- max. 206 A/50 mm² (see deratings)

TID-B150/...



| Order No. | Type | Description | Contacts | | |
|-----------|-------------|-------------------|------------|--|-----------------|
| | | | Number | Conductor cross-section mm ² | Connection type |
| 30.0014 | TID-B150/25 | Receptacle | 3 sockets | 25 | Crimping |
| 30.0015 | TID-B150/35 | | 3 sockets | 35 | Crimping |
| 30.0016 | TID-B150/50 | | 3 sockets | 50 | Crimping |
| 30.0017 | TID-B150/L | Receptacle, empty | s. page 26 | – | Crimping/screws |

Spare parts

| | | | |
|---------|-----------|------------------|------------|
| 31.5301 | 6KT-KOD/S | Hexagonal coding | s. page 59 |
|---------|-----------|------------------|------------|

Accessories

| | | | |
|---------|-----------------|----------------------------|------------|
| 30.0018 | EG-TS-M50-150-3 | End housing | s. page 57 |
| 30.0021 | WST-TS/150 | Heat-shrink part, straight | s. page 58 |
| 30.0011 | SHZ-KP150 | Protective cap | s. page 61 |
| 18.5505 | MVS-8 | Blind plugs | s. page 63 |



Tools, page 64 – 67



Assembly instructions MA201

www.staubli.com/electrical

WeldFix 12 – Ø 12 mm



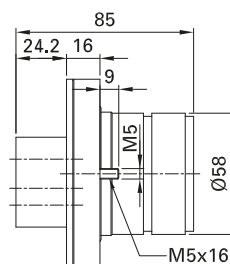
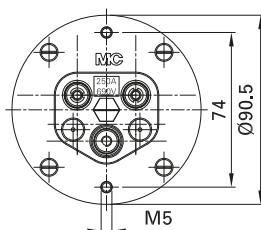
Receptacle TID-B250/...

Receptacle for Ø 12 mm sockets with crimping connection to 95 mm². The supplied hexagonal coding (optional) prevents any risk of confusion when making connections.

Note:

- max. 325 A/95 mm² (see deratings)

TID-B250/...



| Order No. | Type | Description | Contacts | | |
|-----------|-------------|-------------------|-------------|--|-----------------|
| | | | Number | Conductor cross-section mm ² | Connection type |
| 30.2011 | TID-B250/35 | Receptacle | 3 sockets | 35 | Crimping |
| 30.2012 | TID-B250/50 | | 3 sockets | 50 | Crimping |
| 30.2013 | TID-B250/70 | | 3 sockets | 70 | Crimping |
| 30.2014 | TID-B250/95 | | 3 sockets | 95 | Crimping |
| 30.2015 | TID-B250/L | Receptacle, empty | see page 29 | – | Crimping |

Accessories

| | | | |
|--------------|-------------------|-------------------|------------|
| 30.0063 | EG-TS-M50-150-4/5 | End housing | s. page 57 |
| 30.0066 | EG-TS-M63 | | |
| 30.5311 | 6KT-KOD/TID/S180 | Hexagonal coding | s. page 59 |
| 18.9008 | SP2/0.5-1.5 | Pilot contact pin | s. page 60 |
| 30.2030 | SHZ-KP250 | Protective cap | s. page 61 |
| Upon request | MVS12 | Blind plugs | s. page 63 |



Tools, page 64 – 67



Assembly instructions MA201

www.staubli.com/electrical

WELD CONTROLLER CONNECTOR 4-POLE (3+PE)

Weld controller connector

This chapter describes Weldfix 8 Ø 8 mm connectors (3+PE) for connecting welding controller cabinets of spot-welding guns to robot arms used in vehicle body construction.

Stäubli Electrical Connectors offers extremely reliable 4-pole power supply solutions (3 phases and 1 protective earth (PE)) for welding different types of welding controllers. The entire range is supplied with additional accessories such as various strain

reliefs, safety covers and coding pins for additional safety.



Range of use:



Frequency converter

WeldFix 8 – Ø 8 mm



Receptacle TSS150/3/...

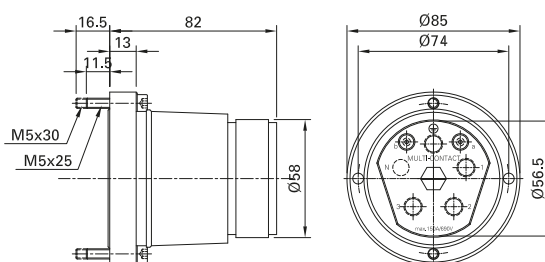
Receptacle for Ø 8 mm pins with crimping connection for 16 mm², 25 mm², 35 mm², 50 mm² or screw connections for 16 mm² to 35 mm² (for this order TSS150/3/L-... and pins with screw connections). Contacts are

longitudinally watertight when unmated. Optional pilot contact socket and hexagonal coding. Empty receptacles enable the use of different cable cross sections by using corresponding individual contacts.

Note:

- max. 206 A/50 mm² (see deratings)

TSS150/3/L-M5x25



| Order No. | Type | Description | Contacts | | | Mounting |
|-----------------------|------------------|----------------------|-------------|--|-----------------|-----------|
| | | | Number | Conductor cross-section mm ² | Connection type | |
| 30.0078 | TSS150/3/25 | Receptacle, equipped | 4 pins | 25 | Crimping | 2 × M5x25 |
| 30.0079 | TSS150/3/35 | | 4 pins | 35 | Crimping | 2 × M5x25 |
| 30.0080 | TSS150/3/50 | | 4 pins | 50 | Crimping | 2 × M5x25 |
| 30.0075 | TSS150/3/L-M5x25 | Receptacle, empty | see page 44 | – | Screws | 2 × M5x25 |
| 30.0076 ¹⁾ | TSS150/3/L-M5x30 | | – | – | Screws | 2 × M5x30 |

Accessories

| | | | |
|---------|-------------------|----------------------------|------------|
| 30.0063 | EG-TS-M50-150-4/5 | End housing | s. page 57 |
| 30.0066 | EG-TS-M63 | | |
| 30.0021 | WST-TS/150 | Heat-shrink part, straight | s. page 58 |
| 31.5301 | 6KT-KOD/S | Hexagonal coding | s. page 59 |
| 30.0011 | SHZ-KP150 | Protective cap | s. page 61 |
| 18.5505 | MVS8 | Blind plugs | s. page 63 |



Tools, page 64 – 67



Assembly instructions MA200

www.staubli.com/electrical

Contacts for receptacle TSS150/3/...

Ø 8 mm pins, silver-plated. Suitable for crimp connection (recommended) for connections from 16 mm² to 50 mm². Pins with screw connections are also available.

Receptacles can be equipped with pilot contacts which, in critical cases, enable the interruption of the circuit.

SP8/...



BP2/0.5-1.5



S8/16-35-SCH



| Order No. | Type | Description | Surface | Conductor cross-section | Rated current | Connection type |
|-----------|--------------|-----------------------|---------|-------------------------|-----------------|-----------------|
| | | | | mm ² | A | |
| 30.0503 | SP8/16 | Pin | Ag | 16 | 105 | Crimping |
| 30.0500 | SP8/25 | | Ag | 25 | 141 | Crimping |
| 30.0501 | SP8/35 | | Ag | 35 | 174 | Crimping |
| 30.0502 | SP8/50 | | Ag | 50 | 196 | Crimping |
| 30.0600 | S8/16-35-SCH | | Ag | 16 – 35 | 125 / 167 / 184 | Screws |
| 18.8008 | BP2/0.5-1.5 | Signal contact socket | Ag | 0.5 – 1.5 | 16 | Crimping |



Tools, page 64 – 67



Assembly instructions MA200

www.staubli.com/electrical

WeldFix 8 – Ø 8 mm



Receptacle TID150/3-S8/M8

Receptacle for Ø 8 mm pins, permanently mounted, with M8 screw connections for cables with lugs. The N-pole is closed with a blind plug. Delivered with hexagonal coding (30.5309) and protective sleeve (30.5318), optional pilot contact socket for retrofitting. Max. 50 mm².

The receptacle has a protective sleeve SH-TID-S, which provides mechanical protection and protects against making contact with connecting pieces.

Note:

- max. 196 A/50 mm² (see deratings)



| Order No. | Type | Description | Contacts | | |
|-----------|----------------|----------------------|----------|-------------------------|-----------------|
| | | | Number | Conductor cross-section | Connection type |
| | | | | mm ² | |
| 30.0087 | TID150/3-S8/M8 | Receptacle, equipped | 4 pins | 16 – 50 | Screws M8 (SW4) |

Spare parts

| | | |
|---------|----------|-------------------|
| 30.5318 | SH-TID-S | Protective sleeve |
|---------|----------|-------------------|

Accessories

| | | | |
|---------|----------------|-----------------------|------------|
| 30.5309 | 6KT-KOD/TID/S2 | Hexagonal coding | s. page 59 |
| 18.8008 | BP2/0.5-1.5 | Pilot contact socket | s. page 60 |
| 30.5312 | PKK-TID/S | Pilot contact chamber | s. page 60 |
| 30.0062 | SHZ-KP150/2 | Protective cap | s. page 61 |



Tools, page 64 – 67



Assembly instructions MA210

www.staubli.com/electrical

WeldFix 8 – Ø 8 mm

Receptacle TSB150/3/...

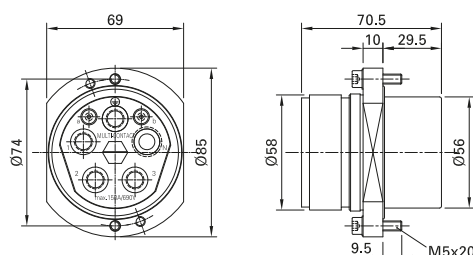


5-pole receptacle for Ø 8 mm sockets with screw or crimping connection (recommended) and first mate/last break ground contact. The rotatable mounting flange enables optimal positioning of the connector.

Longitudinally watertight when unmated. Optional pilot contact pins and hexagonal coding.

Note:

- Empty receptacles enable the use of different cable cross sections using corresponding individual contacts.
- max. 196 A/50 mm² (see deratings)



| Order No. | Type | Description | Contacts | | |
|-----------|-------------|----------------------|-------------|--|-----------------|
| | | | Number | Conductor cross-section mm ² | Connection type |
| 30.0072 | TSB150/3/25 | Receptacle, equipped | 4 sockets | 25 | Crimping |
| 30.0073 | TSB150/3/35 | | 4 sockets | 35 | Crimping |
| 30.0074 | TSB150/3/50 | | 4 sockets | 50 | Crimping |
| 30.0070 | TSB150/3/L | Receptacle, empty | see page 48 | – | Crimping/screws |

Accessories

| | | | |
|---------|-------------------|----------------------------|------------|
| 30.0063 | EG-TS-M50-150-4/5 | End housing | s. page 57 |
| 30.0066 | EG-TS-M63 | | |
| 30.0021 | WST-TS/150 | Heat-shrink part, straight | s. page 58 |
| 31.5301 | 6KT-KOD/S | Hexagonal coding | s. page 59 |
| 30.0062 | SHZ-KP150/2 | Protective cap | s. page 61 |
| 18.5505 | MVS8 | Blind plugs | s. page 63 |



Tools, page 64 – 67



Assembly instructions MA200

www.staubli.com/electrical

WeldFix 8 – Ø 8 mm

Receptacle TID-B150/3/...

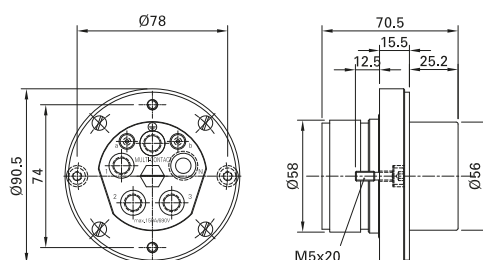


5-pole receptacle for Ø 8 mm sockets with crimping connection to 50 mm² or socket connections for 16 mm² to 35 mm², if nec-

essary. A hexagonal coding (31.5301) is included on delivery and thus prevents mistakes when combining connectors.

Note:

- max. 196 A/50 mm² (see deratings)



| Order No. | Type | Description | Contacts | | |
|-----------|---------------|----------------------|-------------|--|-----------------|
| | | | Number | Conductor cross-section mm ² | Connection type |
| 30.0084 | TID-B150/3/25 | Receptacle, equipped | 4 sockets | 25 | Crimping |
| 30.0085 | TID-B150/3/35 | | 4 sockets | 35 | Crimping |
| 30.0086 | TID-B150/3/50 | | 4 sockets | 50 | Crimping |
| 30.0082 | TID-B150/3/L | Receptacle, empty | see page 48 | – | Crimping/screws |

Accessories

| | | | |
|---------|-------------------|-------------------------------|------------|
| 30.0063 | EG-TS-M50-150-4/5 | End housing | s. page 57 |
| 30.0066 | EG-TS-M63 | | |
| 30.0021 | WST-TS/150 | Heat-shrink part, straight | s. page 58 |
| 31.5301 | 6KT-KOD/S | Hexagonal coding (spare part) | s. page 59 |
| 30.0062 | SHZ-KP150/2 | Protective cap | s. page 61 |
| 18.5505 | MVS8 | Blind plugs | s. page 63 |



Tools, page 64 – 67



Assembly instructions MA201

www.staubli.com/electrical

Contacts for receptacle TSB150/3/... and TID-B150/3/...

Ø 8 mm sockets with MULTILAM contact technology.

Suitable for crimp connection (recommended) for connections from 16 to 50 mm².

Sockets with screw connections are also available.

Receptacles can be equipped with pilot contacts which, in critical cases, enable the interruption of the circuit.

BP8/ ...



SP2/0.5-1.5



B8/16-35-SCH



| Order No. | Type | Description | Surface | Conductor cross-section | Rated current | Connection type |
|-----------|--------------|-------------------|---------|-------------------------|---------------|------------------|
| | | | | mm ² | A | |
| 30.0103 | BP8/16 | Socket | Ag | 16 | 105 | Crimping |
| 30.0100 | BP8/25 | | Ag | 25 | 141 | Crimping |
| 30.0101 | BP8/35 | | Ag | 35 | 174 | Crimping |
| 30.0102 | BP8/50 | | Ag | 50 | 196 | Crimping |
| 30.0200 | B8/16-35-SCH | | Ag | 16 – 35 | 125/167/184 | Screw connection |
| 18.9008 | SP2/0.5-1.5 | Pilot contact pin | Ag | 0.5 – 1.5 | 16 | Crimping |



Tools, page 64 – 67



Assembly instructions MA201

www.staubli.com/electrical

WELDING TRANSFORMER CONNECTOR 5-POLE (3+N+PE)

Frequency converter connector

This chapter describes Ø 8 mm connectors (3+N+PE) for the power supply of welding controllers.

Stäubli Electrical Connectors offers extremely reliable 5-pole power supply solutions (3 phases, 1 neutral conductor (N-pol) and protective earth (PE)) for welding different types of welding controllers. The entire range is supplied with additional accessories such as various strain reliefs, safety covers and coding pins for additional safety.



Range of use:



Frequency converter

WeldFix 8 – Ø 8 mm

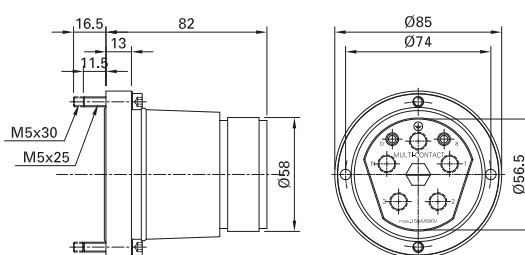


Receptacle TSS150/2/...

Receptacle for Ø 8 mm pins with screw or crimping connection (recommended). Delivered with hexagonal coding, optional pilot contact socket. Longitudinally watertight when unmated.

Note:

- Both empty receptacles enable the use of different cable cross sections using corresponding individual contacts.
- max. 206 A/50 mm² (see deratings).



| Order No. | Type | Description | Contacts | | | Mounting |
|-----------|------------------|----------------------|-------------|-------------------------|-----------------|-----------|
| | | | Number | Conductor cross-section | Connection type | |
| | | | | mm ² | | |
| 30.0031 | TSS150/2/25 | Receptacle, equipped | 5 pins | 25 | Crimping | 2 × M5x25 |
| 30.0032 | TSS150/2/35 | | 5 pins | 35 | Crimping | 2 × M5x25 |
| 30.0033 | TSS150/2/50 | | 5 pins | 50 | Crimping | 2 × M5x25 |
| 30.0028 | TSS150/2/L-M5x25 | Receptacle, empty | see page 51 | – | Crimping/screws | 2 × M5x25 |
| 30.0029 | TSS150/2/L-M5x30 | | | – | Crimping/screws | 2 × M5x30 |

Accessories

| | | | |
|---------|-------------------|-------------------------------|------------|
| 30.0063 | EG-TS-M50-150-4/5 | End housing | s. page 57 |
| 30.0066 | EG-TS-M63 | | |
| 30.0021 | WST-TS/150 | Heat-shrink part, straight | s. page 58 |
| 31.5301 | 6KT-KOD/S | Hexagonal coding (spare part) | s. page 59 |
| 30.0062 | SHZ-KP150/2 | Protective cap | s. page 61 |
| 18.5505 | MVS8 | Blind plugs | s. page 63 |



Tools, page 64 – 67



Assembly instructions MA200

www.staubli.com/electrical

Contacts for receptacle TSS150/2/...

Ø 8 mm pins, silver-plated. Suitable for crimp connection (recommended) for connections from 16 to 50 mm². Pins with screw connections are also available.

Receptacles can be equipped with pilot contacts which, in critical cases, enable the interruption of the circuit.

SP8/...



BP2/0.5-1.5



S8/16-35-SCH



| Order No. | Type | Description | Surface | Conductor cross-section | Rated current | Connection type |
|-----------|--------------|-----------------------|---------|-------------------------|-----------------|-----------------|
| | | | | mm ² | A | |
| 30.0503 | SP8/16 | Pin | Ag | 16 | 105 | Crimping |
| 30.0500 | SP8/25 | | Ag | 25 | 141 | Crimping |
| 30.0501 | SP8/35 | | Ag | 35 | 174 | Crimping |
| 30.0502 | SP8/50 | | Ag | 50 | 196 | Crimping |
| 30.0600 | S8/16-35-SCH | | Ag | 16 – 35 | 125 / 167 / 184 | Screws |
| 18.8008 | BP2/0.5-1.5 | Signal contact socket | Ag | 0.5 – 1.5 | 16 | Crimping |



Tools, page 64 – 67



Assembly instructions MA200

www.staubli.com/electrical

WeldFix 8 – Ø 8 mm



Receptacle TID150/2-S8/M8

Receptacle for Ø 8 mm pins, permanently mounted, with M8 screw connections for lines with ferrules. Delivered with hexagonal coding (30.5309) and protective sleeve (30.5318), optional pilot contact socket for retrofitting. Max. 50 mm².

The receptacle has a protective sleeve SH-TID-S, which provides mechanical protection and protects against making contact with connecting pieces.

Note:

- max. 196 A/50 mm² (see deratings).



| Order No. | Type | Description | Contacts | | |
|-----------|----------------|----------------------|----------|--|------------------|
| | | | Number | Conductor cross-section mm ² | Connection type |
| 30.0039 | TID150/2-S8/M8 | Receptacle, equipped | 5 pins | 16 – 50 | Screws (M8, SW4) |

Spare parts

| | | |
|---------|----------|-------------------|
| 30.5318 | SH-TID-S | Protective sleeve |
|---------|----------|-------------------|

Accessories

| | | | |
|---------|----------------|-------------------------------|------------|
| 30.5309 | 6KT-KOD/TID/S2 | Hexagonal coding (spare part) | s. page 59 |
| 18.8008 | BP2/0.5-1.5 | Pilot contact socket | s. page 60 |
| 30.5312 | PKK-TID/S | Pilot contact chamber | s. page 60 |
| 30.0062 | SHZ-KP150/2 | Protective cap | s. page 61 |



Tools, page 64 – 67



Assembly instructions MA210

www.staubli.com/electrical

WeldFix 8 – Ø 8 mm

Receptacle TSB150/2/...



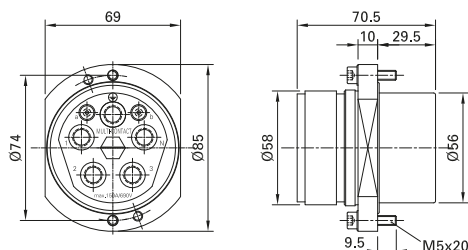
5-pole receptacle for Ø 8 mm sockets with screw or crimping connection (recommended) and first mate/last break ground contact. The rotatable mounting flange enables optimal positioning of the connector. Contacts

are longitudinally watertight when unmated. Optional pilot contact pins and hexagonal coding.

Note:

- Empty receptacles enable the use of different cable cross sections using corresponding individual contacts.
- max. 196 A/50 mm² (see deratings).

Mounting flange, rotatable



| Order No. | Type | Description | Contacts | | |
|-----------|-------------|----------------------|-------------|--|-----------------|
| | | | Number | Conductor cross-section mm ² | Connection type |
| 30.0025 | TSB150/2/25 | Receptacle, equipped | 5 sockets | 25 | Crimping |
| 30.0026 | TSB150/2/35 | | 5 sockets | 35 | Crimping |
| 30.0027 | TSB150/2/50 | | 5 sockets | 50 | Crimping |
| 30.0023 | TSB150/2/L | Receptacle, empty | see page 26 | – | Crimping/screws |

Accessories

| | | | |
|---------|-------------------|----------------------------|------------|
| 30.0063 | EG-TS-M50-150-4/5 | End housing | s. page 57 |
| 30.0066 | EG-TS-M63 | | |
| 30.0021 | WST-TS/150 | Heat-shrink part, straight | s. page 58 |
| 31.5301 | 6KT-KOD/S | Hexagonal coding | s. page 59 |
| 30.0062 | SHZ-KP150/2 | Protective cap | s. page 61 |
| 18.5505 | MVS8 | Blind plugs | s. page 63 |



Tools, page 64 – 67



Assembly instructions MA200

www.staubli.com/electrical

Contacts for TSB150/2/...

Ø 8 mm sockets with MULTILAM contact technology.

Suitable for crimp connection (recommended) for connections from 16 to 50 mm².

Sockets with screw connections are also available.

Receptacles can be equipped with pilot contacts which, in critical cases, enable the interruption of the circuit.

BP8/ ...



SP2/0.5-1.5



B8/16-35-SCH



| Order No. | Type | Description | Surface | Conductor cross-section | Rated current | Connection type |
|-----------|--------------|-------------------|---------|-------------------------|---------------|------------------|
| | | | | mm ² | A | |
| 30.0103 | BP8/16 | Socket | Ag | 16 | 105 | Crimping |
| 30.0100 | BP8/25 | | Ag | 25 | 141 | Crimping |
| 30.0101 | BP8/35 | | Ag | 35 | 174 | Crimping |
| 30.0102 | BP8/50 | | Ag | 50 | 196 | Crimping |
| 30.0200 | B8/16-35-SCH | | Ag | 16 – 35 | 125/167/184 | Screw connection |
| 18.9008 | SP2/0.5-1.5 | Pilot contact pin | Ag | 0.5 – 1.5 | 16 | Crimping |



Tools, page 64 – 67



Assembly instructions MA201

www.staubli.com/electrical

WeldFix 8 – Ø 8 mm

Receptacle TID-B150/2/...

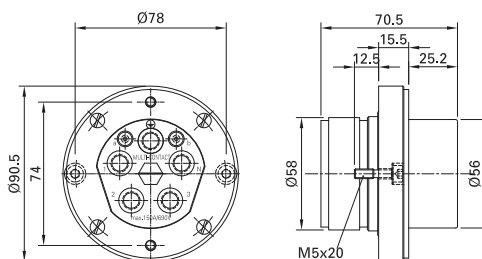


4-pole receptacle for Ø 8 mm sockets with crimping connection to 50 mm² or socket connections for 16-35 mm², if necessary. A

hexagonal coding (31.5301) is included on delivery and prevents any risk of confusion when making connections.

Note:

- max. 196 A/50 mm² (see deratings).



| Order No. | Type | Description | Contacts | | |
|-----------|---------------|----------------------|-------------|--|-----------------|
| | | | Number | Conductor cross-section mm ² | Connection type |
| 30.0036 | TID-B150/2/25 | Receptacle, equipped | 5 sockets | 25 | Crimping |
| 30.0037 | TID-B150/2/35 | | 5 sockets | 35 | Crimping |
| 30.0038 | TID-B150/2/50 | | 5 sockets | 50 | Crimping |
| 30.0034 | TID-B150/2/L | Receptacle, empty | see page 54 | – | Crimping/screws |

Accessories

| | | | |
|---------|-------------------|-------------------------------|------------|
| 30.0063 | EG-TS-M50-150-4/5 | End housing | s. page 57 |
| 30.0066 | EG-TS-M63 | | |
| 30.0021 | WST-TS/150 | Heat-shrink part, straight | s. page 58 |
| 31.5301 | 6KT-KOD/S | Hexagonal coding (spare part) | s. page 59 |
| 30.0062 | SHZ-KP150/2 | Protective cap | s. page 61 |
| 18.5505 | MVS8 | Blind plugs | s. page 63 |

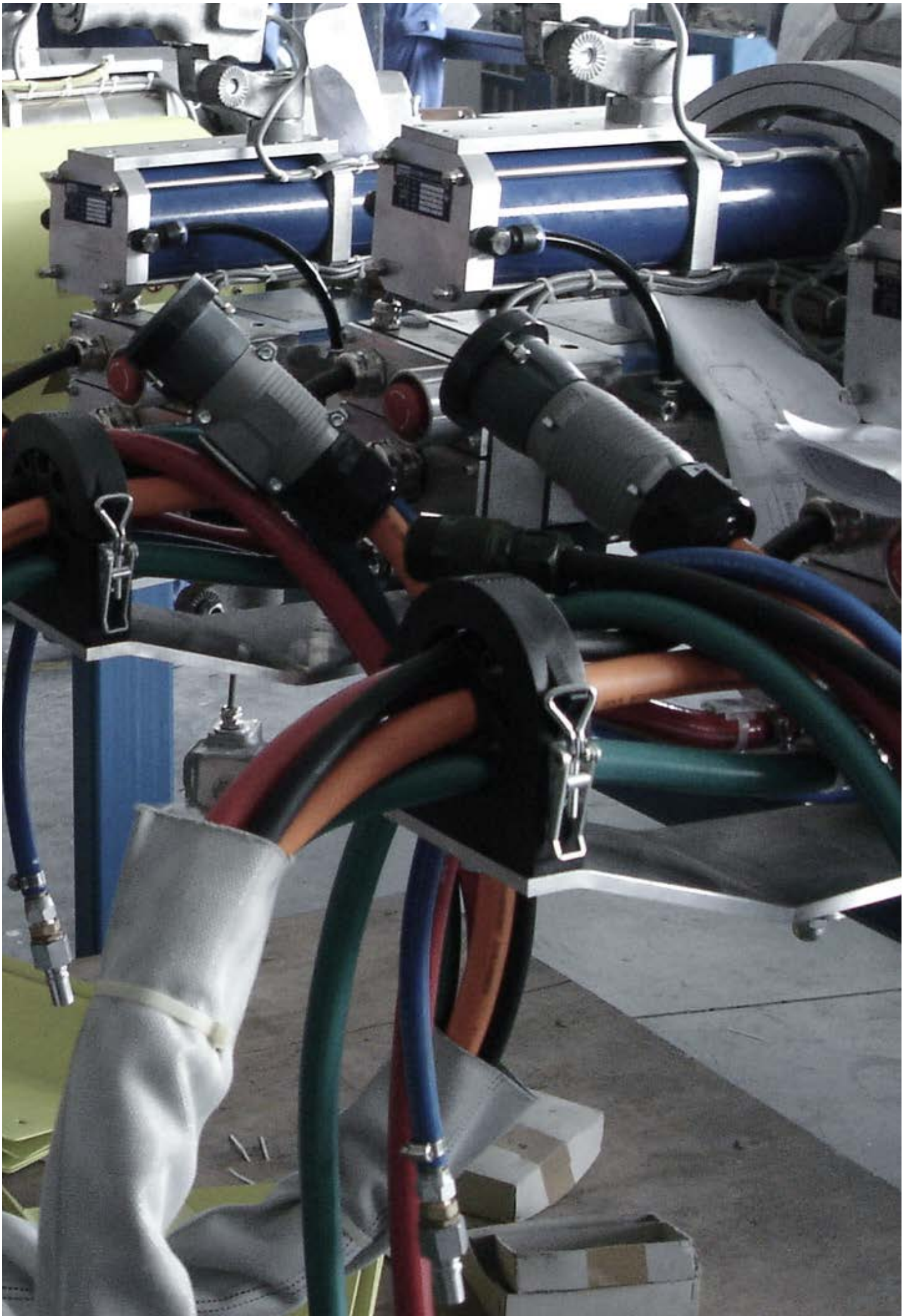


Tools, page 64 – 67



Assembly instructions MA201

www.staubli.com/electrical



WeldFix Accessories

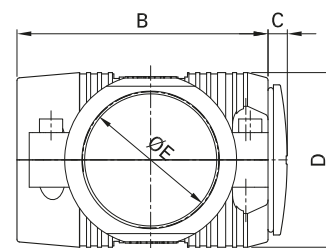
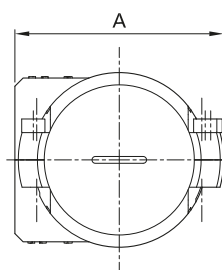
End housing EG-TS...

Reusable end housing includes two half shells, which enable mounting on the receptacle without removing the contacts.
2 configurations per housing: straight or 90° angled.

2 types of threads: Metric (standard) and PG.
The unused cable outlet is closed with the supplied blind plug. Cable gland is not supplied.
Degree of protection IP54



EG-TS-M...



| Order No. | Type | Dimensions (mm) | | | | Thread | Suitable for |
|----------------|-------------------|-----------------|-------|------|----|--------|--|
| | | A | B | C | D | | |
| Ø 6 mm | | | | | | | |
| 15.5168 | EG-TS-M40-135/3 | 67.5 | 76 | ~6 | 54 | M40 | TSS...; TSB...; TID-B... |
| Ø 8 mm | | | | | | | |
| 30.0018 | EG-TS-M50-150-3 | 80 | 92.6 | ~7 | 64 | M50 | TSS150/...; TSB150/...; TID-B150... |
| 30.0063 | EG-TS-M50-150-4/5 | 76.5 | 92 | ~7.1 | 64 | M50 | TSS150/3/...; TSB150/3/...; TID-B150/3/... |
| 30.0066 | EG-TS-M63 | 91.5 | 104 | ~8 | 77 | M63 | TSS150/2/...; TSB150/2/...; TID-B150/2/... |
| Ø 12 mm | | | | | | | |
| 30.0063 | EG-TS-M50-150-4/5 | 76.5 | 92 | ~7.1 | 64 | M50 | TSS250/...; TSB250/...; TID-B250/... |
| 30.0066 | EG-TS-M63 | 91.5 | 104.5 | ~8 | 77 | M63 | |



Assembly instructions MA200

www.staubli.com/electrical



Tools, page 64 – 67

WeldFix Form shrouds WST...

Heat-shrinkable and robust molded parts made from elastomer. Use the model with the adhesive coating (inner wall) for dynamic applications.

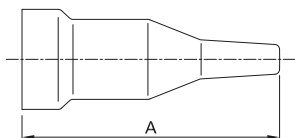
Available in different versions:

- Straight form, adhesive coating
- Straight form without adhesive (static applications)

Degree of protection: IP67.

Flammable UL 94: HB

WST-...



| Order No. | Type | Description | Adhesive coating (inner wall) | Length (mm) | Suitable for |
|----------------|------------|-------------|-------------------------------|------------------|--|
| | | | | A | |
| Ø 6 mm | | | | | |
| 15.5027 | WST-TS | Straight | x | 96 ¹⁾ | TSS/...; TSB/...; TID-B/... |
| 15.0399 | WST-WF6 | Straight | - | 96 | |
| Ø 8 mm | | | | | |
| 30.0021 | WST-TS/150 | Straight | x | 171 | TSS150/...; TSB150/...; TSS150/3/...; TID-B150/3/...; TSS150/2/...; TSB150/2/...; TID-B150/2/... |
| Ø 12 mm | | | | | |
| 30.0021 | WST-TS/150 | Straight | x | 171 | TSS250/...; TSB250/... |



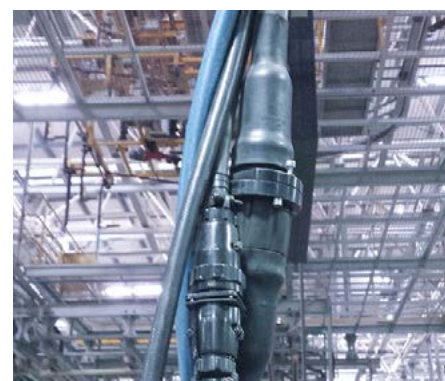
Tools, page 64 – 67



Assembly instructions MA200

www.staubli.com/electrical

¹⁾ ±10% after unrestricted recovery



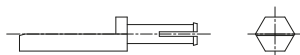
Hexagonal codings

Hexagonal codings are connected to the connectors without tools and ensure proper connection.

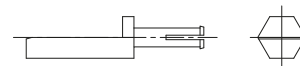
Note:

- The second coding (counterpart) must be ordered with the equivalent of the connector.

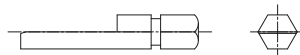
6KT-KOD/TID/S135



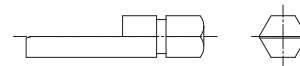
6KT-KOD/TID/S180



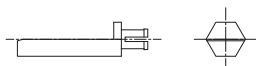
6KT-KOD/A



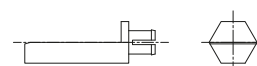
6KT-KOD/S



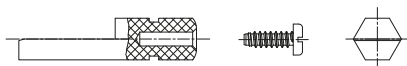
6KT-KOD/TAG135



6KT-KOD/TAG150



6KT-KOD/TID/S2



| Order No. | Type | Key width | Type of mounting | Suitable for |
|----------------|------------------|-----------|------------------|--|
| Ø 6 mm | | | | |
| 30.5313 | 6KT-KOD/TID/S135 | 9 | Latched | TID-S6/M5; TID-S6/M5; TID-B/... |
| 31.5300 | 6KT-KOD/A | 9 | Plugs | TSS/...; TSB/...; TID-B/... |
| 15.5331 | 6KT-KOD/TAG135 | 9 | Latched | TAG135 |
| Ø 8 mm | | | | |
| 30.5311 | 6KT-KOD/TID/S180 | 11 | Latched | TID150-S...; TID150-S8/M8; TID-B250/... |
| 31.5301 | 6KT-KOD/S | 11 | Plugs | TSS150/...; TSB150/...; TID-B150/3/...; TSS150/2/...; TSB150/2/...; TID-B150/2/...; TID-B150/...; TSB150/3..., TSS150/3... |
| 30.5309 | 6KT-KOD/TID/S2 | 11 | Screws | TID150/2-S8/M8, TID150/3-S8/M8 |
| 30.5322 | 6KT-KOD/TAG150 | 11 | Latched | TAG150; TAG250 |
| Ø 12 mm | | | | |
| 30.5311 | 6KT-KOD/TID/S180 | 11 | Latched | TSS250/...; TSB250/... |



Assembly instructions MA210

www.staubli.com/electrical



Tools, page 64 – 67

Pilot contacts

All pins and socket carriers can be equipped with pilot contacts, except for UR applications.

Pilot contact sockets for receptacles TID...-S require additional pilot contact chambers for mounting.

BP2/0.5-1.5



SP2/0.5-1.5



| Order No. | Type | Description | Surface | Conductor cross-section | Rated current | Connection type |
|-----------|-------------|----------------------|---------|-------------------------|---------------|-----------------|
| | | | | mm ² | A | |
| 18.8008 | BP2/0.5-1.5 | Pilot contact socket | Ag | 0.5 – 1.5 | 16 | Crimping |
| 18.9008 | SP2/0.5-1.5 | Pilot contact pin | Ag | 0.5 – 1.5 | 16 | Crimping |

Pilot contact chamber PKK-TID/S

If you are using pilot contact sockets, for Type TID...-S... pilot contact chambers must be mounted beforehand.



| Order No. | Type | Description | Type of mounting | Suitable for |
|-----------|-----------|-----------------------|------------------|---|
| 30.5312 | PKK-TID/S | Pilot contact chamber | Latched | TID-S6/M5 TID150-SP8/... TID150/2-S8/M8 TID150-S8/M8 TID150/3-S8/M8 |



Tools, page 64 – 67

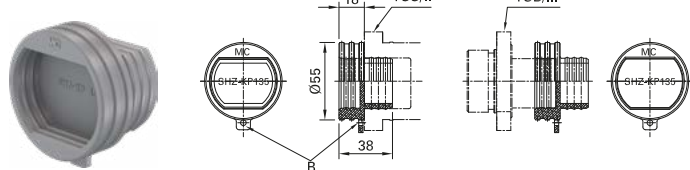
WeldFix Protective caps

Protective caps are used to protect unmated connectors from dust and water ingress (IP44). They are also suitable for TSS... or TSB...

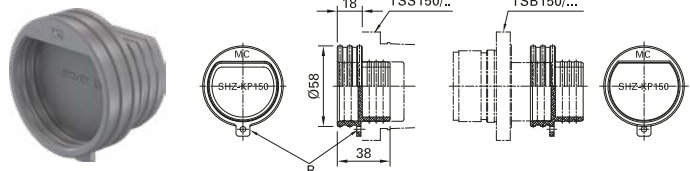
flange receptacles, receptacles and panel mount housing.

A string or chain can be attached to the lug (B) to keep the protective cap from being misplaced.

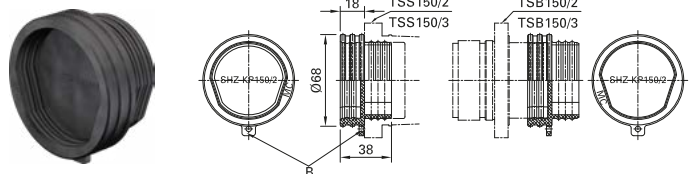
SHZ-KP135



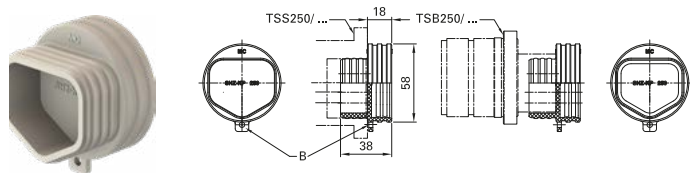
SHZ-KP150



SHZ-KP150/2



SHZ-KP250



| Order No. | Type | Suitable for |
|----------------|-------------|--|
| Ø 6 mm | | |
| 15.0335 | SHZ-KP135 | TSS...; TSB...; TID-B..., TID-S..., TAG135 |
| Ø 8 mm | | |
| 30.0011 | SHZ-KP150 | TSS150/...; TSB150/... |
| 30.0062 | SHZ-KP150/2 | TSS150/3/...; TSB150/3/...; TID150/3-S8/M8; TID-B150/3/...; TSS150/2/...; TID150/2-S8/M8; TID-B150/2/...; TSB150/2/... |
| Ø 12 mm | | |
| 30.2030 | SHZ-KP250 | TSS250/...; TSB250/...; TID-B250/...; TAG250 |

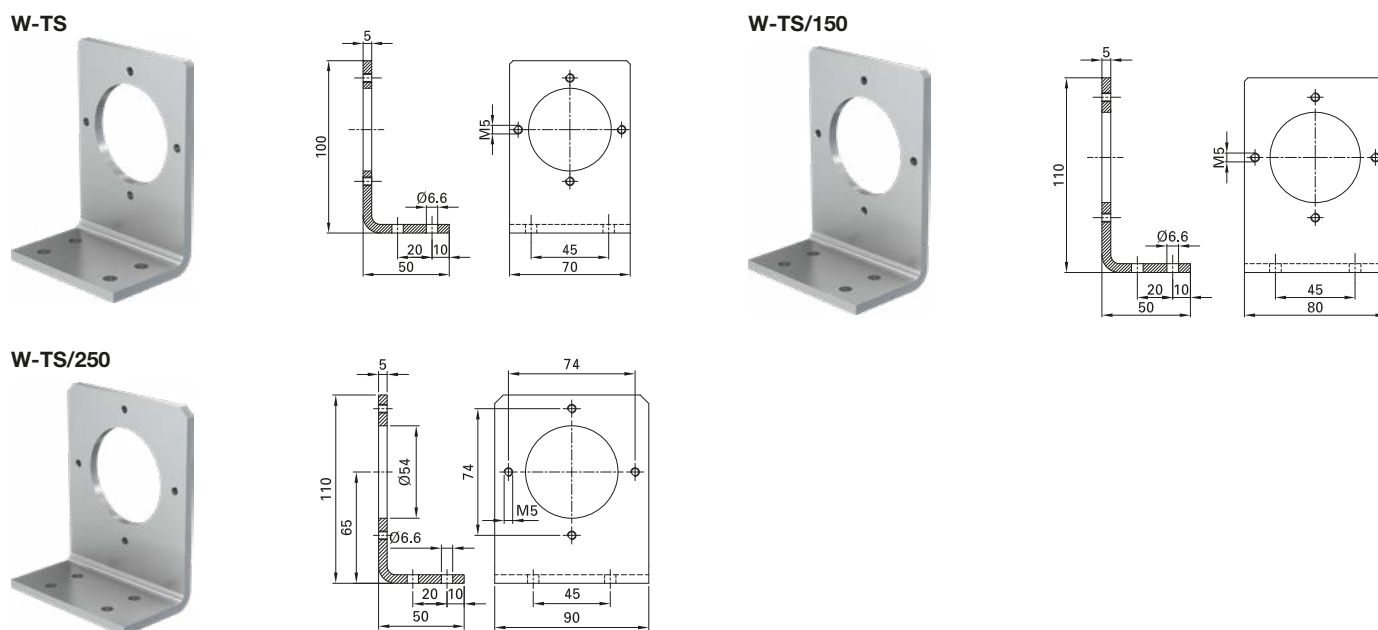


Tools, page 64 – 67

WeldFix Mounting bracket

Angled and very stable steel bracket for mounting a complete TSS.../TSB... plug-in connection. These compact mounting

brackets have four holes for mounting on a carrier, e.g. a robot arm.



| Order No. | Type | Description | Material | Suitable for |
|----------------|----------|------------------|----------|------------------------|
| Ø 6 mm | | | | |
| 15.5043 | W-TS | Mounting bracket | Steel | TSS...; TSB... |
| Ø 8 mm | | | | |
| 15.5044 | W-TS/150 | Mounting bracket | Steel | TSS150/...; TSB150/... |
| Ø 12 mm | | | | |
| 30.0064 | W-TS/250 | Mounting bracket | Steel | TSS250/...; TSB250/... |



Assembly instructions MA200

www.staubli.com/electrical

Blind plugs

Blind plugs are mounted in unoccupied contact chambers to ensure longitudinal ingress protection.

MVS6



MVS8



MVS12



| Order No. | Type | Description | Suitable for |
|----------------|-------|-------------|--------------------------------------|
| Ø 6 mm | | | |
| 18.5503 | MVS6 | Blind plug | TSS/...; TSB/...; TID-B/... |
| Ø 8 mm | | | |
| 18.5505 | MVS8 | Blind plug | TSS150/...; TSB150/...; TID-B150/... |
| Ø 12 mm | | | |
| Upon request | MVS12 | Blind plug | TSS250/...; TSB250/...; TID-B250/... |



Tools, page 64 – 67

INSTALLATION TOOLS

Insertion and extraction tools

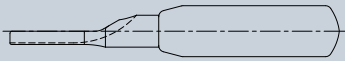
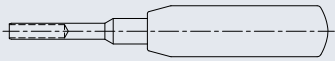
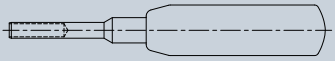
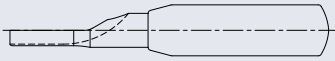

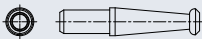
Insertion and extraction of contacts:

We recommend using a centering cone in the power plugs, which is inserted before mounting on the socket. Before inserting the contacts, the receptacle must be lubricated

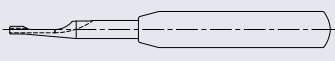
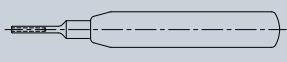
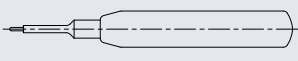
with industrial alcohol, spirit or Lusin ALRO OL151, after which the contacts are inserted from the rear into the contact chambers with a crimped conductor.

| Order No. | Type | Nominal-Ø pin/socket | Name | Insertion tool | Extraction tool |
|-----------|------|----------------------|------|----------------|-----------------|
| | | mm | | | |

For power contacts

| | | | | | | |
|---------|------------|--------|---|--|---|---|
| 18.3016 | ME-WZ6 | 6 | Insertion tool (pin/socket) |  | x | |
| 18.3018 | MSA-WZ6 | 6 | Pin extraction tool |  | | x |
| 18.3017 | MBA-WZ6 | 6/8/12 | Extraction tool Sockets: 6/8 mm Pins: 12 mm |  | | x |
| 18.3021 | ME-WZ11/38 | 8 | Insertion tool (pin/socket) |  | x | |
| 18.3022 | MSA-WZ8 | 8/12 | Extraction tool Pins: 8 mm Sockets: 12 mm |  | | x |
| 18.5852 | MEK-WZ-12 | 12 | Centering cone Socket insertion tool |  | x | |

For pilot contacts

| | | | | | | |
|---------|------------|------------|-----------------------------|--|---|---|
| 18.3003 | ME-WZ1.5/2 | 1,5/1,57/2 | Insertion tool (pin/socket) |  | x | |
| 18.3009 | MSA-WZ2 | 2 | Pin extraction tool |  | | x |
| 18.3008 | MBA-WZ2 | 2 | Socket extraction tool |  | | x |



Assembly instructions MA200, MA201

www.staubli.com/electrical

Crimping pliers case CZK2-...

Stäubli recommends the use of this cordless hydraulic crimping tool together with the crimping dies for crimping the contacts.

This tool guarantees a safe and high quality crimp termination.

- **Lowest contact resistance**
- **Special Stäubli crimp dies with punch notch**
- **Best ergonomically for high volume applications.**



| Pos. No. | Order No. | Type | Name | |
|----------|-----------|----------|---|-------|
| 1a | 18.3111 | CZK2-230 | Crimping pliers case (incl. strap and plastic case) | 230 V |

Contents

| | | | |
|---|---------|-------------|--|
| 2 | - | CZ-B500 | Electro hydraulic crimping tool B500, compatible with the Cordless Alliance System (CAS) |
| 3 | 18.3042 | ALI-18 | Li-Ion battery – 18 V – 4.0 Ah |
| 4 | 18.3023 | MTB11-25-50 | Crimp insert 25 mm ² /4 AWG |
| 5 | 18.3024 | MTB13-35-50 | Crimp insert 35 mm ² /~2 AWG |
| 6 | 18.3044 | ALG2-230 | Battery charger AC 230 V |

| | | | | |
|----|---------|----------|---|-----------|
| 1b | 18.3112 | CZK2-110 | Crimping pliers case (incl. strap and plastic case) | 110/120 V |
|----|---------|----------|---|-----------|

Contents

| | | | |
|---|-----------------------|-------------|--|
| 2 | - | CZ-B500 | Electro hydraulic crimping tool B500, compatible with the Cordless Alliance System (CAS) |
| 3 | 18.3042 | ALI-18 | Li-Ion battery – 18 V – 4.0 Ah |
| 4 | 18.3023 | MTB11-25-50 | Crimp insert 25 mm ² /4 AWG |
| 5 | 18.3024 | MTB13-35-50 | Crimp insert 35 mm ² /~2 AWG |
| 7 | 18.3043 ¹⁾ | ALG2-110 | Battery charger 110 / AC 120 V |

Optional accessories

| | | | |
|---|---------|---------------|---|
| 8 | 18.3029 | MTB9-16-50 | Crimp insert 16 mm ² /6 AWG |
| 9 | 18.3025 | MTB14,5-50-50 | Crimp insert 50 mm ² /1/0 AWG |
| - | 18.3026 | MTB17-70-50 | Crimp insert 70 mm ² /2/0 AWG |
| - | 18.3027 | MTB20-95-50 | Crimp insert 95 mm ² /~3/0 AWG |



Assembly instructions MA306

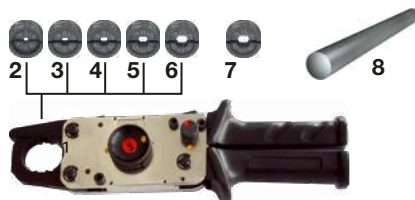
www.staubli.com/electrical

* PSE-approved charger upon request.

Manual crimping pliers and accessories

Stäubli recommends crimping plier M-PZ-13 for low quantity crimping or individual assembly and crimping plier M-PZ-T2600 for higher quantity crimping assembly.

M-PZ-13



M-PZ-T2600



MP-13



| Pos. | Order No. | Type | Nominal-Ø pin/ socket | Conductor cross-section | Accessories Assembly instructions | Name |
|------|-----------|-------------------------|--------------------------|----------------------------|---|--------------------------|
| | | | mm | mm ² | | |
| 1 | 18.3700 | M-PZ13 | | | MA224 | Crimping pliers |
| 2 | 18.3701 | MES-PZ-TB5/6 | 6 | 6 | | Crimping die for Pos. 1 |
| 3 | 18.3702 | MES-PZ-TB8/10 | 6 | 10 | | Crimping die for Pos. 1 |
| 4 | 18.3703 | MES-PZ-TB9/16 | 6/8 | 16 | | Crimping die for Pos. 1 |
| 5 | 18.3704 | MES-PZ-TB11/25 | 6/8 | 25 | | Crimping die for Pos. 1 |
| 6 | 18.3705 | MES-PZ-TB13/35 | 8 | 35 | | Crimping die for Pos. 1 |
| 7 | 18.3707 | MPS-PZ13 | | | | Test insert |
| 8 | 18.3708 | MALU-PZ13 | | | MA224 | Round test rod |
| 9 | 18.3749 | MP13 | | | | Storage box |
| 10 | 18.3710 | M-PZ-T2600 | | | MA226 | Crimping pliers with box |
| 11 | 18.3711 | TB8-17 ¹⁾ | 6/8 | 10 & 70 ¹⁾ | | Crimping die for Pos. 10 |
| 12 | 18.3712 | TB9-13 ¹⁾ | 6/8 | 16 & 35 ¹⁾ | | Crimping die for Pos. 10 |
| 13 | 18.3713 | TB11-14,5 ¹⁾ | 6/8 | 25 & 50 ¹⁾ | | Crimping die for Pos. 10 |
| | 18.3714 | TB7-20 | 12 | 95 ¹⁾ | | Crimping die for Pos. 10 |




Assembly instructions MA224, MA226, MA085

www.staubli.com/electrical

¹⁾ Inserts can be used on two sides.
Numbers 8 & 17, 9 & 13, 11 & 14,5, 7 & 20
= Outside crimping sleeves Ø

M-CZ



| Pos. | Order No. | Type | Nominal-Ø pin/ socket | Conductor cross-section | Accessories Assembly instructions | Name |
|------|-----------|------|--------------------------|----------------------------|--|------|
| | | | mm | mm ² |  | |

For pilot contacts

| | | | | | | |
|----|---------|-------------|---|-----------|-------|--|
| 14 | 18.3800 | M-CZ | | | MA085 | Crimping pliers |
| 15 | 18.3801 | MES-CZ | – | 0.14 – 4 | MA085 | Locator for M-CZ, adjustable (except for Ø 0.6 mm contacts) |
| 16 | 18.3802 | MES-CZ1.5/2 | 2 | 0.5 – 1.5 | MA085 | Locator for M-CZ, for pilot contacts 18.8008 and 18.9008 |



Assembly instructions MA224, MA226,
MA085

www.staubli.com/electrical

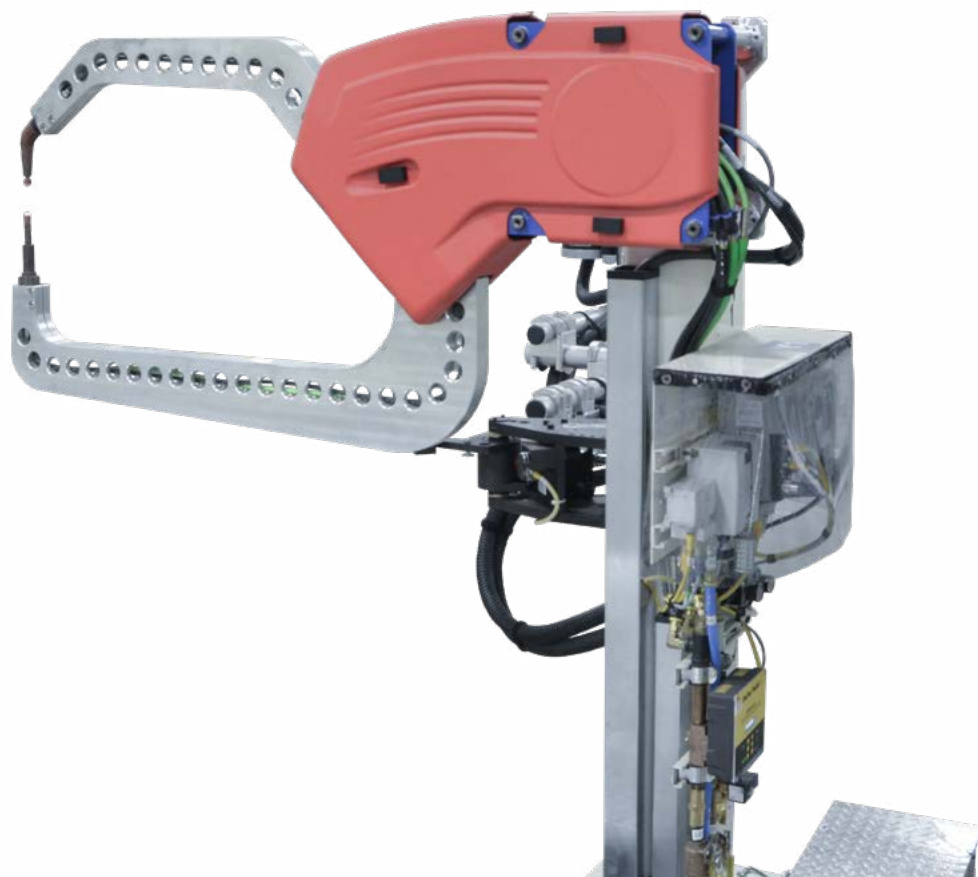
Electrical values rating factor 0.9

The current-carrying capacity of connectors is limited by the thermal load capacity of the materials of the contact elements including connections, insulating parts and lines/cables.

The derating curve applies to currents that are continuous, not intermittent (corresponds to duty cycle (ED) 100%), allowed to flow through each phase conductor, PE without current, at the same time, without the upper temperature limit being exceeded. Standard reduced duty cycles (ED) in the resistance spot-welding process are taken into consideration on the following pages 69 – 72.

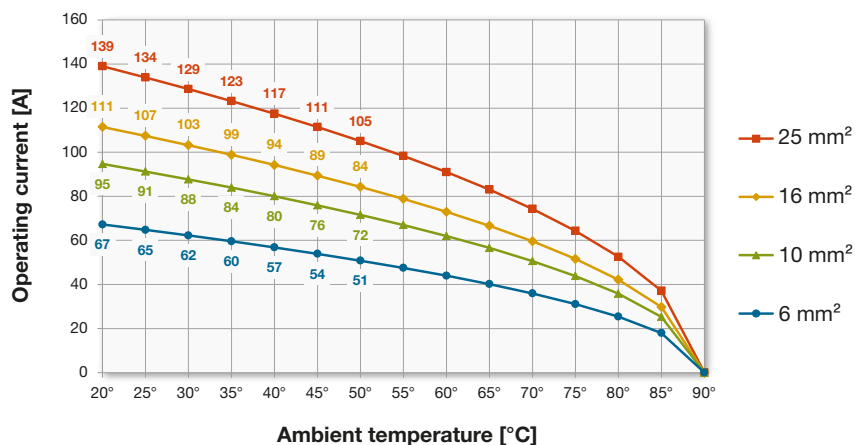
Measuring and test methods to DIN 41640/Part 3.

The values given in the derating diagrams apply to connectors (see Standard EN 60204). For the permissible load of the lines, refer to the relevant regulations such as DIN VDE 0298-4 and DIN EN 60204-1, IEC 60204-1.



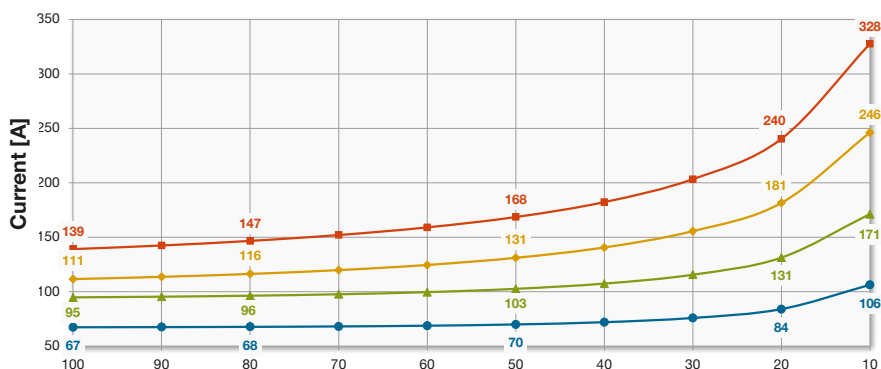
Ø 6 mm contacts

Current-carrying capacity of 6, 10, 16 and 25 mm²-conductors, 3-pole



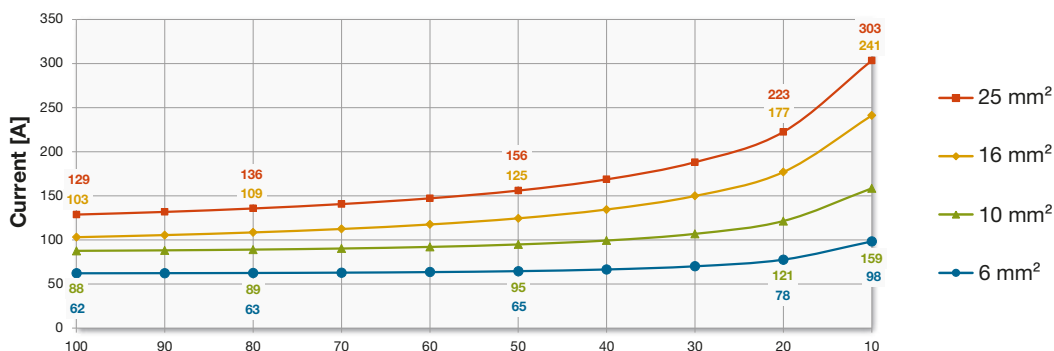
Current at temp. 20°C

Cycle duration 10 min.



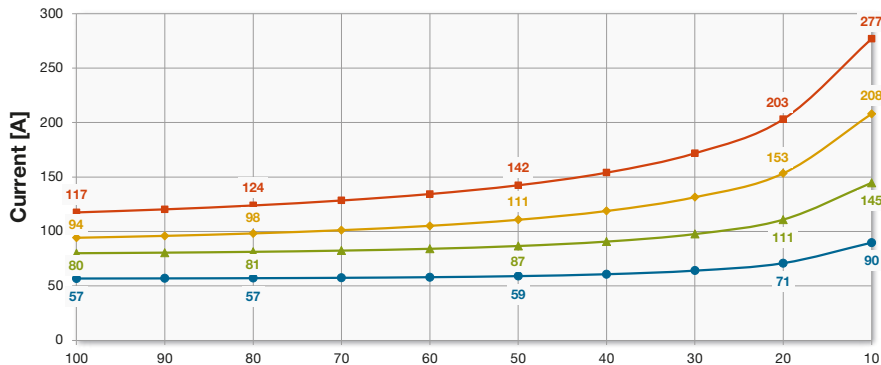
Current at temp. 30°C

Cycle duration 10 min.



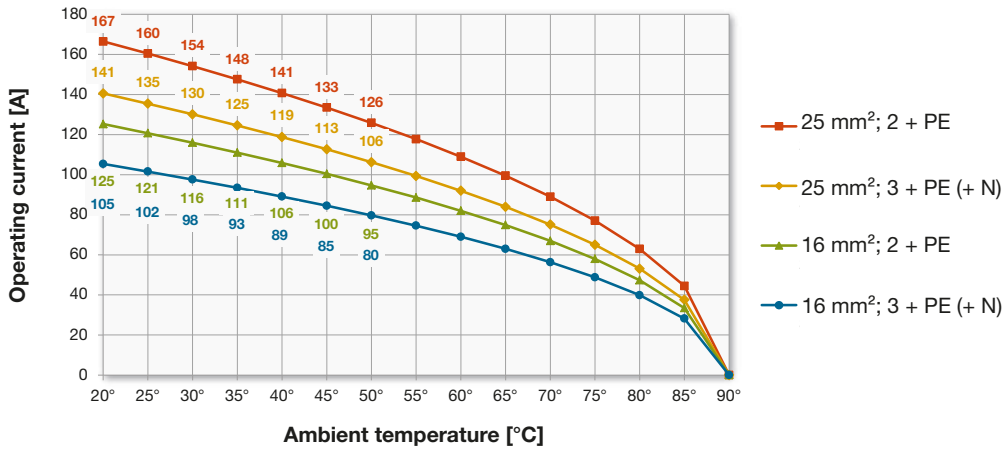
Current at temp. 40°C

Cycle duration 10 min.



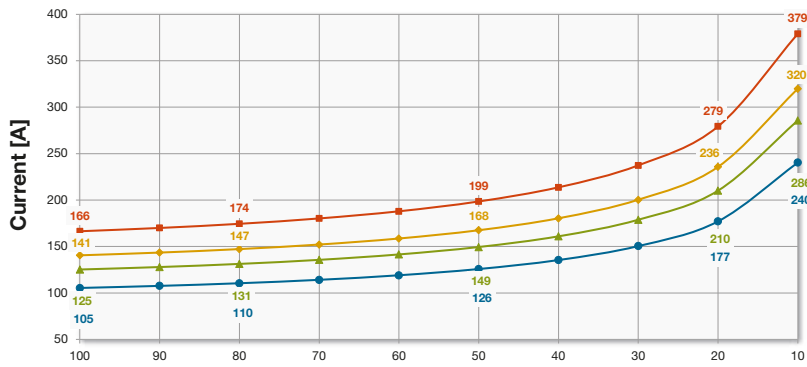
Ø 8 mm contacts

Current-carrying capacity of 16 and 25 mm²-conductors, 3- to 5-pole



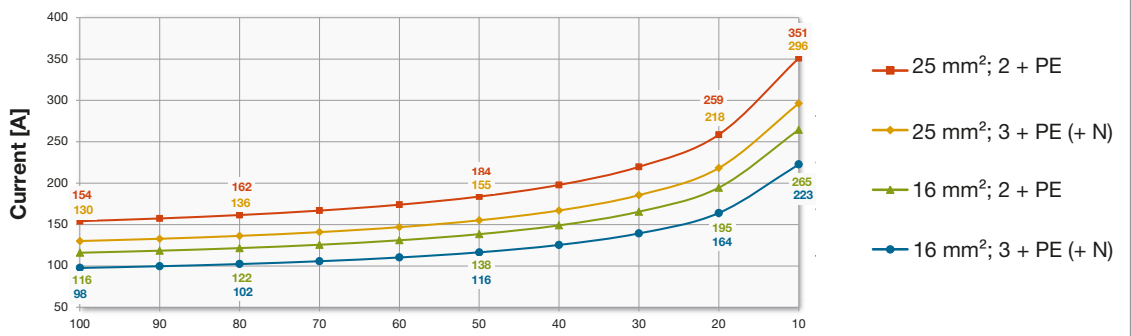
Current at temp. 20°C

Cycle duration 10 min.



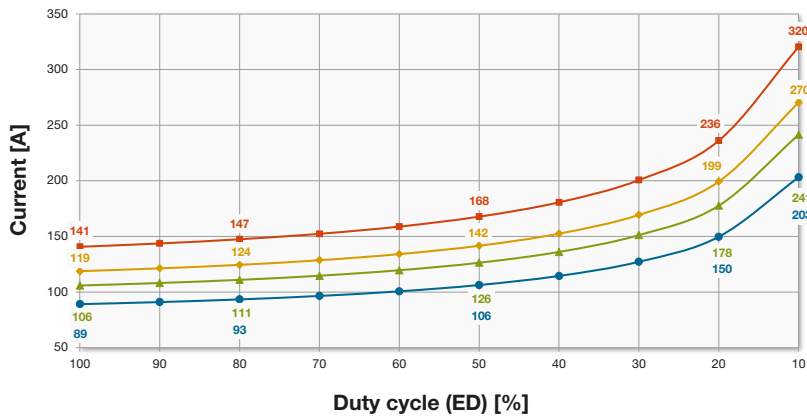
Current at temp. 30°C

Cycle duration 10 min.



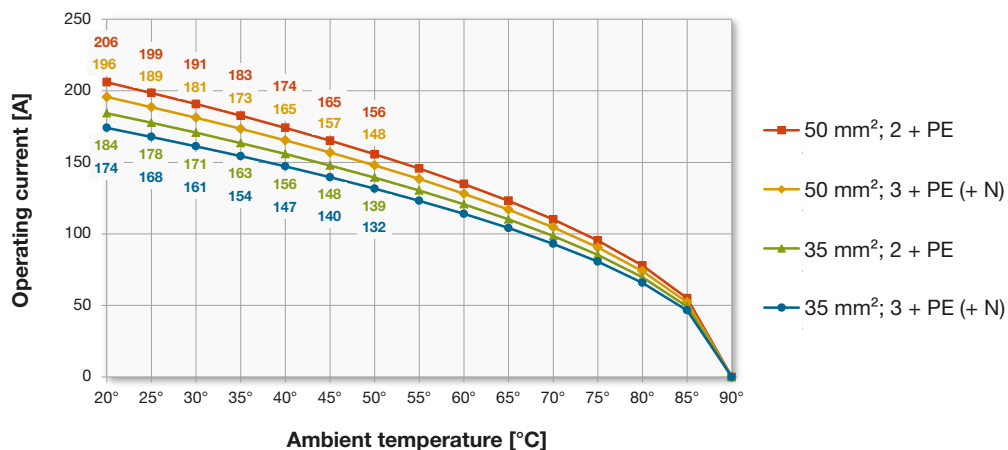
Current at temp. 40°C

Cycle duration 10 min.



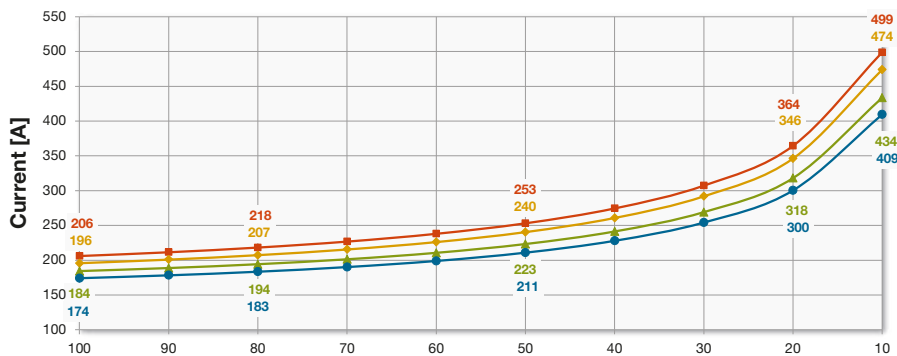
Ø 8 mm contacts

Current-carrying capacity of 35 and 50 mm²-conductors, 3- to 5-pole



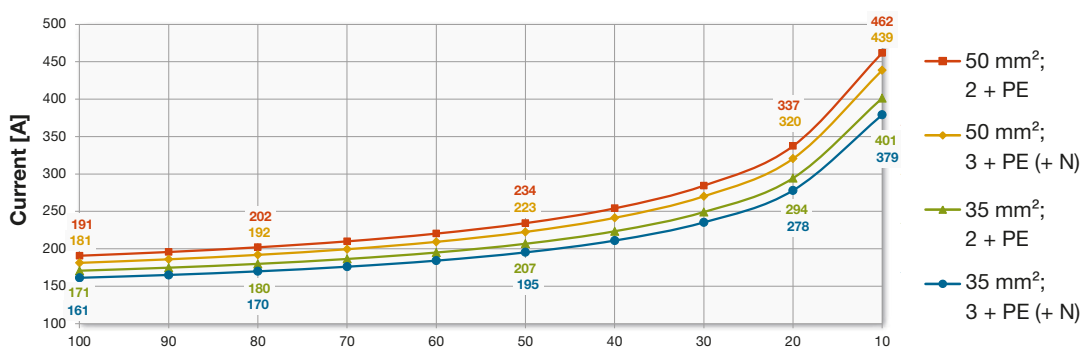
Current at temp. 20°C

Cycle duration 10 min.



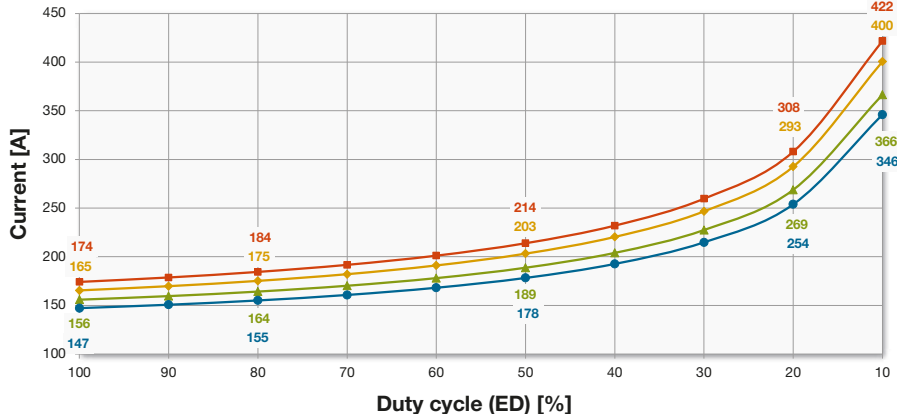
Current at temp. 30°C

Cycle duration 10 min.



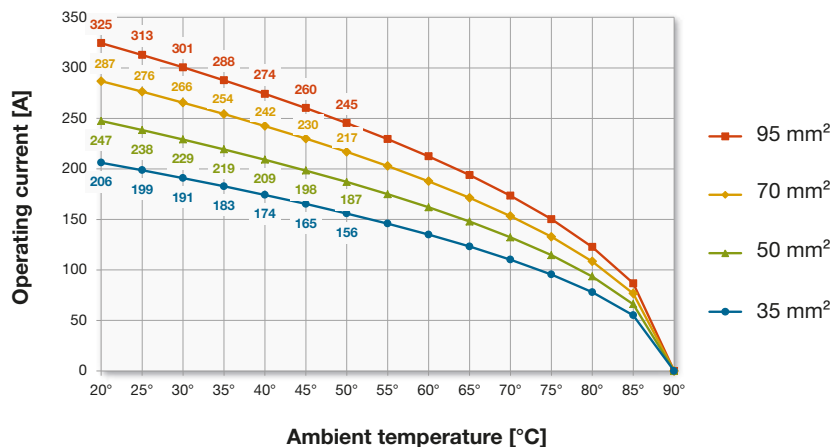
Current at temp. 40 °C

Cycle duration 10 min.



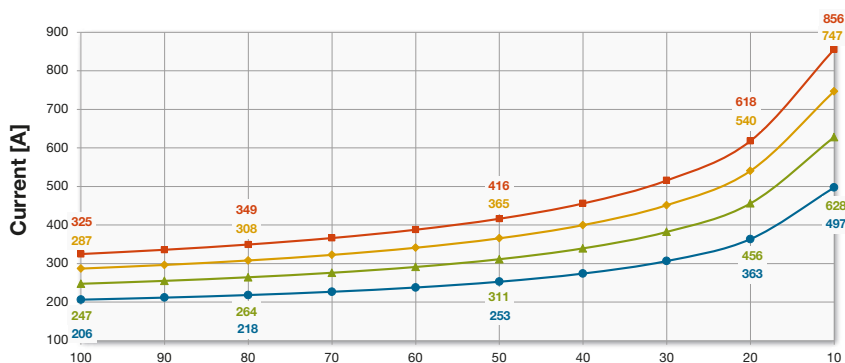
Ø 12 mm contacts

Current-carrying capacity of 35, 50, 70 and 95 mm²-conductors, 3-pole



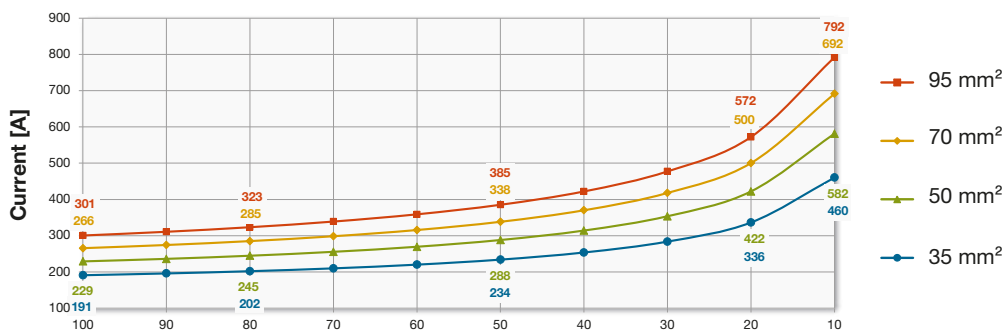
Current at temp. 20°C

Cycle duration 10 min.



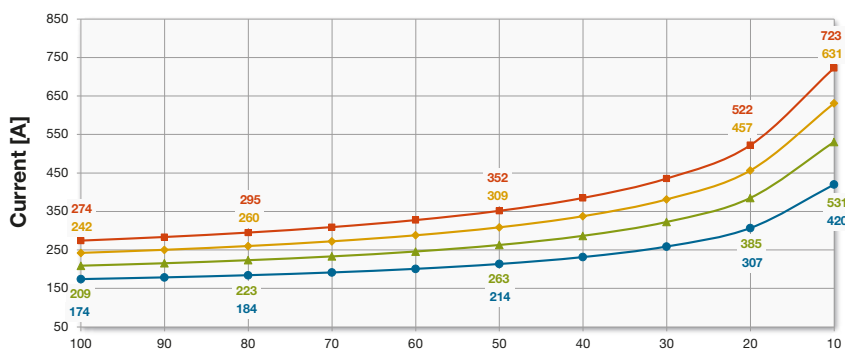
Current at temp. 30°C

Cycle duration 10 min.



Current at temp. 40°C

Cycle duration 10 min.



Technical data

Number of poles: ¹⁾

2+PE, 3+PE, 3+PE+N

Rated current:

To 325 A

(see derating diagram, p. 68–72)

Rated voltage power contacts:

AC 690 V – AC 1000 V

Test voltage:

3.5 kV (50 Hz 1 min.)

Insulation resistance:

> 10³ MΩ

Insulation coordination:

6 kV/3 VDE 0110-1, IEC 60664-1

Operating temperature:

-40 °C to +100 °C

Connection:

Crimping

6 mm² to 95 mm² for main contacts

0.5 mm² to 1.5 mm² for pilot contacts

Screw connections for TID/2-S8/M8

25 mm² to 50 mm² with ferrules for multiple and fine wire lines.

Conductor cross-section:

| | |
|----------------|--|
| 67 A – 139 A: | 6 mm ² to 25 mm ² TID-S6/M5 cable lug DIN46234 5-6 to 5-25 |
| 105 A – 206 A: | 16 mm ² to 50 mm ² TID-S8/M8 cable lug DIN46234 8 to 50 |
| 174 A – 325 A | 35 mm ² to 95 mm ² |

Material/Surface:

Contacts:

CuZn alloy, silver-plated. Rigid pins, sockets with Stäubli MULTILAM, spring loaded.

Insulation body:

Elastomer or UP (TID-S..., TID...-S...)

Mounting flanges:

Aluminum alloy anodized/POM

End housing: PA

Degree of protection:

In accordance with IEC 529/DIN VDE 0470-T1

EN 60529 when plugged in:

IP 67 with use of heat-shrink molded parts.

IP 54 with use of 2-part end housing.

Longitudinally watertight when unmated.

Additional regulations:

DIN EN 61984, ISO 10656

VDE 0627

¹⁾ Pilot contacts optional

Technical notes

Stäubli MULTILAM

- A technical description for electrical contacts with contact plates
- See catalog: MULTILAM – Technical overview

Extraction and insertion force

Stated values are forces after 20 to 30 actuations and thin lubricant film. The forces are higher when parts are new.

Tightening torques

The torques apply to clean, lightly greased bolts, nuts and washers.

Rated current

Rated current (IEC/EN 61984, DIN VDE 0298-4) is the current which a connector can simultaneously carry through all contacts (not intermittent) without exceeding the upper limit temperature. In addition, the current carrying capacity of the connected conductors is considered.

Duty cycle

The duty cycle is an equivalent current consideration, which is based on the current and break times according to the VDE 0530-1 standard.

Rated voltage

(IEC/EN 60664, IEC/EN 61984) is the voltage according to the connector rated and related to the specific operating properties.

Contact resistance

Contact resistance is the resistance occurring at the point where two contact surfaces touch. Its value is calculated using the measured voltage drop at the rated current.

Test voltage

The voltage that a connector can withstand under the determined conditions without breakdown or flashover.

Insulation coordination

(IEC/EN 60664) is used to rate the insulation and determines the rated voltage.

Mating cycles

The maximum mating frequency of the standard connector is 1 000 to 5 000 connections depending on the conditions of use. This requires a thin lubricant film on the contacts before the first mating process. Higher mating cycles put stress on the surface, the guide and the lubrication, and always necessitate special clarifications and special versions.

Crimp connection

Crimping tools are a critical aspect of achieving the rated electrical and mechanical performance. Stäubli therefore recommends reliable, quality tools. If using a crimper not listed in this catalog, please contact your local Stäubli representative for compatibility.

Screw terminal connectors

Ferrules should be used when connecting flexible or highly-flexible conductors.

Derating diagrams

The current-carrying capacity of connectors is limited by the thermal load capacity of the materials of the contact elements including connections and insulating parts. The derating curve applies to currents that are continuous, not intermittent, allowed to flow through each phase conductor, unoccupied PE, at the same time, without the upper temperature limit being exceeded. The values given in the derating diagrams apply to connectors and connected lines. For the permissible load of the lines, the relevant regulations such as DIN VDE 0298-4 should be considered.

IP degree of protection

IP (Ingress Protection)
Specification of the degree of protection according to international regulations for contact protection and density

Cable gland

For proper insulation, Stäubli recommends the use of plastic cable glands only. Should metallic cable glands be used, those have to be grounded to prevent risk of electric shock. Cable glands are not supplied.

Used plastics

| Initials | Material designation | Temperature °C | Flammable UL94 |
|----------|-------------------------|-----------------|----------------|
| CR | Chloroprene rubber | -40°C to +100°C | V1 |
| PO | Polyolefin | -40°C to +100°C | |
| PA | Polyamide (PA) | -40°C to +100°C | V0 |
| POM | Polyoxymethylene | -40°C to +100°C | HB |
| PF | Phenol formaldehyde | -40°C to +100°C | V0 |
| TPE | Thermoplastic elastomer | -40°C to +100°C | HB |
| UP | Polyester resin, GF | | V0 |

Index by Type

| Type | Page |
|--------------------|------------------------------------|
| 6KT-KOD/A | 59 |
| 6KT-KOD/S | 40, 59 |
| 6KT-KOD/TAG135 | 59 |
| 6KT-KOD/TAG150 | 59 |
| 6KT-KOD/TID/S2 | 59 |
| 6KT-KOD/TID/S135 | 59 |
| 6KT-KOD/TID/S180 | 59 |
| AB-GEH/TID150 | 18 |
| AB-GEH-TID150/35-K | 18 |
| ALG2-110 | 65 |
| ALG2-230 | 65 |
| ALI-18 | 65 |
| B8/16-35-SCH | 26, 48, 54 |
| BP2/0,5-1,5 | 32, 35, 37, 44, 51, 60 |
| BP6/6 | 23 |
| BP6/10 | 23 |
| BP6/16 | 23 |
| BP6/25 | 23 |
| BP8/16 | 26, 48, 54 |
| BP8/25 | 26, 48, 54 |
| BP8/35 | 26, 48, 54 |
| BP8/50 | 26, 48, 54 |
| BP8-TJ/25 | 27 |
| BP8-TJ/35 | 27 |
| BP8W-TJ/25 | 27 |
| BP8W-TJ/35 | 27 |
| BP12/35 | 29 |
| BP12/35 PE | 29 |
| BP12/50 | 29 |
| BP12/50 PE | 29 |
| BP12/70 | 29 |
| BP12/70 PE | 29 |
| BP12/95 | 29 |
| BP12/95 PE | 29 |
| CZK2-110 | 65 |
| CZK2-230 | 65 |
| EG-TS-M40-135/3 | 57 |
| EG-TS-M50-150-3 | 57 |
| EG-TS-M50 150/4-5 | 28, 36, 43, 46, 47, 50, 53, 55, 57 |
| EG-TS-M50-150-4/5 | 57 |

| Type | Page |
|----------------|------------|
| EG-TS-M63 | 57 |
| ITJID | 19 |
| I-TJSB | |
| MALU-PZ13 | 66 |
| MBA-WZ2 | 64 |
| MBA-WZ6 | 64 |
| M-CZ | 67 |
| MEK-WZ-12 | 64 |
| MES-CZ | 67 |
| MES-CZ1,5/2 | 67 |
| MES-PZ-TB5/6 | 66 |
| MES-PZ-TB8/10 | 66 |
| MES-PZ-TB9/16 | 66 |
| MES-PZ-TB11/25 | 66 |
| MES-PZ-TB13/35 | 66 |
| ME-WZ1,5/2 | 64 |
| ME-WZ6 | 64 |
| ME-WZ11/38 | 64 |
| MP13 | 66 |
| MPS-PZ13 | 66 |
| M-PZ13 | 66 |
| M-PZ-T2600 | 66 |
| MSA-WZ2 | 64 |
| MSA-WZ6 | 64 |
| MSA-WZ8 | 64 |
| MTB09-16-50 | 65 |
| MTB11-25-50 | 65 |
| MTB13-35-50 | 65 |
| MTB14,5-50-50 | 65 |
| MTB17-70-50 | 65 |
| MTB20-95-50 | 65 |
| MVS6 | 63 |
| MVS8 | 63 |
| MVS12 | |
| PKK-TID/S | 60 |
| S6/M6-43 | 13 |
| S6/M6-53 | 13 |
| S8/16-35-SCH | 35, 44, 51 |
| S8/M8-41 | 15 |
| S8/M8-57 | 15 |
| S8-TJ/M8 | 19 |
| S12/M8-56 | 20 |
| S12/M10-56 | 20 |
| SH-TID-S | 45, 52 |

| Type | Page |
|---------------------|------------------------|
| SHZ-KP135 | 61 |
| SHZ-KP150 | 61 |
| SHZ-KP150/2 | 61 |
| SHZ-KP250 | 61 |
| SP2/0,5-1,5 | 23, 26, 29, 48, 54, 60 |
| SP2-TJ/0.5-1.5 | 27 |
| SP6/6 | 32 |
| SP6/10 | 32 |
| SP6/16 | 32 |
| SP6/25 | 32 |
| SP8/16 | 35, 44, 51 |
| SP8/25 | 35, 44, 51 |
| SP8/35 | 35, 44, 51 |
| SP8/50 | 35, 44, 51 |
| SP12/35 | 37 |
| SP12/50 | 37 |
| SP12/70 | 37 |
| SP12/95 | 37 |
| TAG135/M5X20 | 13 |
| TAG150 | 15 |
| TAG250 | 20 |
| TB7-20 | 66 |
| TB8-17 | 66 |
| TB9-13 | 66 |
| TB11-14,5 | 66 |
| TID150/2-S8/M8 | 52 |
| TID150/3-S8/M8 | 45 |
| TID150-S8/M8 | 16 |
| TID150-SP8/35/-/026 | 17 |
| TID150-SP8/50/-/026 | 17 |
| TID-B/16 | 39 |
| TID-B/25 | 39 |
| TID-B150/2/25 | 55 |
| TID-B150/2/35 | 55 |
| TID-B150/2/50 | 55 |
| TID-B150/2/L | 55 |
| TID-B150/3/25 | 47 |
| TID-B150/3/35 | 47 |
| TID-B150/3/50 | 47 |
| TID-B150/3/L | 47 |
| TID-B150/25 | 40 |
| TID-B150/35 | 40 |

| Type | Page |
|------------------|--------|
| TID-B150/50 | 40 |
| TID-B150/L | 40 |
| TID-B250/35 | 41 |
| TID-B250/50 | 41 |
| TID-B250/70 | 41 |
| TID-B250/95 | 41 |
| TID-B250/L | 41 |
| TID-B/L | 39 |
| TID-S6/M5 | 14 |
| TJID150+2-S8/M8 | 19 |
| TJSB150+2/25 | 27 |
| TJSB150+2/35 | 27 |
| TJSB150/25 | 27 |
| TJSB150/35 | 27 |
| TSB/16 | 22 |
| TSB/25 | 22 |
| TSB150/2/25 | 53 |
| TSB150/2/35 | 53 |
| TSB150/2/50 | 53 |
| TSB150/2/L | 53 |
| TSB150/3/25 | 46 |
| TSB150/3/35 | 46 |
| TSB150/3/50 | 46 |
| TSB150/3/L | 46 |
| TSB150/25 | 24, 25 |
| TSB150/35 | 24, 25 |
| TSB150/50 | 24, 25 |
| TSB150/L | 24, 25 |
| TSB250/35 | 28 |
| TSB250/50 | 28 |
| TSB250/70 | 28 |
| TSB250/95 | 28 |
| TSB250/L | 28 |
| TSB/L | 22 |
| TSS/16 | 31 |
| TSS/25 | 31 |
| TSS150/2/25 | 50 |
| TSS150/2/35 | 50 |
| TSS150/2/50 | 50 |
| TSS150/2/L-M5x25 | 50 |
| TSS150/2/L-M5x30 | 50 |
| TSS150/3/25 | 43 |
| TSS150/3/35 | 43 |
| TSS150/3/50 | 43 |

| Type | Page |
|------------------|--------|
| TSS150/3/L-M5x25 | 43 |
| TSS150/3/L-M5x30 | 43 |
| TSS150/25 | 33, 34 |
| TSS150/35 | 33, 34 |
| TSS150/50 | 33, 34 |
| TSS150/L M5X25 | 33, 34 |
| TSS150/L M5X30 | 33, 34 |
| TSS250/35 | 36 |
| TSS250/50 | 36 |
| TSS250/70 | 36 |
| TSS250/95 | 36 |
| TSS250/L | 36 |
| TSS/L-M5x30 | 31 |
| TSS/L-M5X25 | 31 |
| WST90-TS | 58 |
| WST90-TS/150 | 58 |
| WST-TS | 58 |
| WST-TS/150 | 58 |
| WST-WF6 | 58 |
| W-TS | 62 |
| W-TS/150 | 62 |
| W-TS/250 | 62 |

Index by Order No.

| Order No. | Page |
|-----------|------|
| 01.0440 | 23 |
| 01.0441 | 23 |
| 01.0442 | 23 |
| 01.0443 | 23 |
| 04.0420 | 13 |
| 04.0423 | 13 |
| 05.0440 | 32 |
| 05.0441 | 32 |
| 05.0442 | 32 |
| 05.0443 | 32 |
| 15.0302 | 22 |
| 15.0303 | 22 |
| 15.0305 | 22 |
| 15.0308 | 31 |
| 15.0309 | 31 |
| 15.0310 | 31 |
| 15.0316 | 14 |
| 15.0318 | 31 |
| 15.0322 | 39 |
| 15.0323 | 39 |
| 15.0324 | 39 |
| 15.0325 | 13 |
| 15.0335 | 61 |
| 15.0399 | 58 |
| 15.5027 | 58 |
| 15.5028 | 58 |
| 15.5043 | 62 |
| 15.5044 | 62 |
| 15.5168 | 57 |
| 15.5331 | 59 |
| 18.3003 | 64 |
| 18.3008 | 64 |
| 18.3009 | 64 |
| 18.3016 | 64 |
| 18.3017 | 64 |
| 18.3018 | 64 |
| 18.3021 | 64 |
| 18.3022 | 64 |
| 18.3023 | 65 |
| 18.3024 | 65 |
| 18.3025 | 65 |
| 18.3026 | 65 |
| 18.3027 | 65 |
| 18.3029 | 65 |

| Order No. | Page |
|------------|------------------------|
| 18.3042 | 65 |
| 18.3043 | 65 |
| 18.3044 | 65 |
| 18.3111 | 65 |
| 18.3112 | 65 |
| 18.3700 | 66 |
| 18.3701 | 66 |
| 18.3702 | 66 |
| 18.3703 | 66 |
| 18.3704 | 66 |
| 18.3705 | 66 |
| 18.3707 | 66 |
| 18.3708 | 66 |
| 18.3710 | 66 |
| 18.3711 | 66 |
| 18.3712 | 66 |
| 18.3713 | 66 |
| 18.3714 | 66 |
| 18.3749 | 66 |
| 18.3800 | 67 |
| 18.3801 | 67 |
| 18.3802 | 67 |
| 18.5503 | 63 |
| 18.5505 | 63 |
| 18.5852 | 64 |
| 18.8008 | 32, 35, 37, 44, 51, 60 |
| 18.9008 | 23, 26, 29, 48, 54, 60 |
| 19.6706 | 27 |
| 19.6707 | 27 |
| 19.6708 | 27 |
| 19.6709 | 19 |
| 19.6711 | 27 |
| 19.6712 | 27 |
| 19.6809 | 27 |
| 19.6810 | 19 |
| 19.6811 | 19 |
| 19.6812 | 27 |
| 19.6813 | 27 |
| 19.6814 | 27 |
| 19.7506 | |
| 30.0000-UR | 25 |
| 30.0000 | 24 |
| 30.0001-UR | 25 |
| 30.0001 | 24 |

| Order No. | Page |
|------------|------------------------------------|
| 30.0002-UR | 25 |
| 30.0002 | 24 |
| 30.0004-UR | 25 |
| 30.0004 | 24 |
| 30.0005-UR | 34 |
| 30.0005 | 33 |
| 30.0006-UR | 34 |
| 30.0006 | 33 |
| 30.0007-UR | 34 |
| 30.0007 | 33 |
| 30.0009-UR | 34 |
| 30.0009 | 33 |
| 30.0010-UR | 34 |
| 30.0010 | 33 |
| 30.0011 | 61 |
| 30.0012 | 15 |
| 30.0014 | 40 |
| 30.0015 | 40 |
| 30.0016 | 40 |
| 30.0017 | 40 |
| 30.0018 | 57 |
| 30.0019 | 16 |
| 30.0021 | 58 |
| 30.0022 | 58 |
| 30.0023 | 53 |
| 30.0025 | 53 |
| 30.0026 | 53 |
| 30.0027 | 53 |
| 30.0028 | 50 |
| 30.0029 | 50 |
| 30.0031 | 50 |
| 30.0033 | 50 |
| 30.0033 | 50 |
| 30.0034 | 55 |
| 30.0036 | 55 |
| 30.0037 | 55 |
| 30.0038 | 55 |
| 30.0039 | 52 |
| 30.0062 | 61 |
| 30.0063 | 28, 36, 43, 46, 47, 50, 53, 55, 57 |
| 30.0063 | 57 |
| 30.0064 | 62 |

| Order No. | Page |
|-------------|------------|
| 30.0065 | 18 |
| 30.0066 | 57 |
| 30.0070 | 46 |
| 30.0072 | 46 |
| 30.0073 | 46 |
| 30.0074 | 46 |
| 30.0075 | 43 |
| 30.0076 | 43 |
| 30.0078 | 43 |
| 30.0079 | 43 |
| 30.0080 | 43 |
| 30.0082 | 47 |
| 30.0084 | 47 |
| 30.0085 | 47 |
| 30.0086 | 47 |
| 30.0087 | 45 |
| 30.0100 | 26, 48, 54 |
| 30.0101 | 26, 48, 54 |
| 30.0102 | 26, 48, 54 |
| 30.0103 | 26, 48, 54 |
| 30.0105 | 29 |
| 30.0106 | 29 |
| 30.0107 | 29 |
| 30.0108 | 29 |
| 30.0109 | 29 |
| 30,010 | 29 |
| 30.0110 | 29 |
| 30.0111 | 29 |
| 30.0200 | 26, 48, 54 |
| 30.0401 | 15 |
| 30.0403 | 15 |
| 30.0409 | 20 |
| 30.0410 | 20 |
| 30.0500 | 35, 44, 51 |
| 30.0501 | 35, 44, 51 |
| 30.0502 | 35, 44, 51 |
| 30.0503 | 35, 44, 51 |
| 30.0508 | 37 |
| 30.0509 | 37 |
| 30.0510 | 37 |
| 30.0511 | 37 |
| 30.0600 | 35, 44, 51 |
| 30.1001-026 | 17 |
| 30.1002-026 | 17 |

| Order No. | Page |
|-----------|--------|
| 30.1030 | 18 |
| 30.2001 | 28 |
| 30.2002 | 28 |
| 30.2003 | 28 |
| 30.2004 | 28 |
| 30.2005 | 28 |
| 30.2006 | 36 |
| 30.2007 | 36 |
| 30.2008 | 36 |
| 30.2009 | 36 |
| 30.2010 | 36 |
| 30.2011 | 41 |
| 30.2012 | 41 |
| 30.2013 | 41 |
| 30.2014 | 41 |
| 30.2015 | 41 |
| 30.2030 | 61 |
| 30.2050 | 20 |
| 30.5309 | 59 |
| 30.5311 | 59 |
| 30.5312 | 60 |
| 30.5313 | 59 |
| 30.5318 | 45, 52 |
| 30.5322 | 59 |
| 31.5300 | 59 |
| 31.5301 | 40, 59 |

Please also note our flat connector series brochures:

- Primary circuit connector RobiFix
- Primary circuit connector RobiFix mini



● Staubli Units ○ Representatives/Agents

Global presence of the Staubli Group

www.staubli.com